

# NORTH CAROLINA **SYMPHONY**

YOUNG PEOPLE'S CONCERT

## Peter and the Wolf

**SAT, APR 6, 2024 | 1PM & 4PM**

MEYMANDI CONCERT HALL, WOOLNER STAGE  
MARTIN MARIETTA CENTER FOR THE PERFORMING ARTS, RALEIGH

North Carolina Symphony  
Michelle Di Russo, *conductor*  
Yolanda Rabun, *narrator*

### PROGRAM

**Johann Strauss, Jr.**  
*On the Beautiful Blue Danube* from *Waltzes, Op. 314*

**Ottorino Respighi**  
*The Cuckoo* from *The Birds*

**Camille Saint-Saëns**  
*Fossils* from *The Carnival of the Animals*

**Sergei Prokofiev**  
*Peter and the Wolf, Op. 67*  
Yolanda Rabun, *narrator*

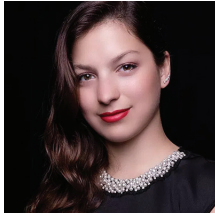
**Wolfgang Amadeus Mozart**  
*Molto allegro* from *Symphony No. 41 in C Major, K. 551, "Jupiter"*

The North Carolina Symphony gratefully acknowledges the support of Young People's Concert Series Sponsor WakeMed Children's.

*This concert is made possible in part by  
The Drs. James and Mary Susan Fulghum Fund.*

## About the Artists

---



**Michelle Di Russo, conductor**

*The Lucy Moore Ruffin Chair*

Michelle Di Russo is Associate Conductor of the North Carolina Symphony where she is responsible for conducting the Symphony's extensive statewide music education concerts. She has conducted UNC Health Summerfest performances, Young People's Concerts, and Statewide Holiday Pops concerts with the Symphony, as well as classical subscription performances in Chapel Hill and Wilmington..

A graceful and powerful force on the podium, Michelle Di Russo is known for her compelling interpretations, passionate musicality, and championing of contemporary music. She has recently been appointed a 2023/24 Dudamel Fellow with the Los Angeles Philharmonic and participated at the Lucerne Festival Academy. An advocate for underrepresented artists, she co-founded the organization Girls Who Conduct to support younger generations of women and non-binary conductors.

Di Russo's artistic journey began in her native country, Argentina, at the age of three with ballet lessons, followed by studies in voice and piano. She has acted on television and onstage. Di Russo holds multiple degrees in Orchestral Conducting from Pontifical Catholic University of Argentina, University of Kentucky (M.M.), and Arizona State University (D.M.A.). She is a former Freeman Conducting Fellow in Chicago Sinfonietta's prestigious Project Inclusion program and a recipient of the Concert Artists Guild's Richard S. Weinert Award.

Previously, Di Russo served as Interim Director of Orchestras at Cornell University, Assistant Conductor for the Phoenix Youth Symphony Orchestra, cover conductor and assistant for The Phoenix Symphony and Arizona Musicfest, and as a conducting fellow at the Cortona Sessions for New Music in Italy. She has also acted as cover conductor for the Minnesota Orchestra, St. Louis Symphony Orchestra, San Diego Symphony, and the National Symphony Orchestra. In the summer of 2022, she served as the Joel Revzen Conducting Fellow at Festival Napa Valley.



**Yolanda Rabun, narrator**

Yolanda Rabun previously appeared with the North Carolina Symphony as the featured soloist for Raleigh Holiday Pops concerts in 2021.

Having graduated from a renowned performing arts high school in her hometown of Atlanta, Georgia, Yolanda Rabun honed her singing and stage skills from a young age. She is a North Carolina-based recording artist who started on the jazz scene, with an appearance on Stanley Baird's 2007 hit single "I Want 2 Love You." She co-wrote several songs, including the title song, for her debut CD *So Real*. Other recordings include her solo CD *Christmastime* and the single "Hold on to Your Dreams." Her third album, *Yolanda*, made appearances on several charts, including the UK Soul Top 30 chart for 11+ weeks and a *Billboard* Most Added List for Smooth Jazz.

Rabun has opened for and sung with Jennifer Holliday, Howard Hewett, Ron Isley and the Isley Brothers, R&B singer Kem, and Sheila E. Appearances around the world have included the Atlanta Jazz Festival, D.C.'s Blues Alley Jazz, and Hollywood's Catalina Jazz Club, as well as tours of Japan, South Korea, Portugal, Spain, Jordan, and Turkey. She has also performed with North Carolina Opera and the Durham Symphony Orchestra and appeared on a number of TV and radio programs.

Rabun is a member of Actor's Equity and the National Academy of Recording Arts & Sciences, as well as a corporate attorney. In September, she returns to Raleigh's Martin Marrietta Center for the Performing Arts as the star of *No Fear and Blues Long Gone: Nina Simone*, a one-woman tribute to the life and music of North Carolina native Nina Simone, written by North Carolina playwright Howard L. Craft.



NORTH CAROLINA **SYMPHONY**

# PETER AND THE WOLF

SAT, APR 6, 2024 | 1PM & 4PM

SERIES SPONSOR **WakeMed**   
Children's

*This concert is made possible in part by  
The Drs. James and Mary Susan Fulghum Fund.*

# The Musicians of the North Carolina Symphony

---

Carlos Miguel Prieto,  
Music Director  
*The Maxine and  
Benjamin Swalin  
Chair*

Grant Llewellyn,  
Music Director Laureate

Michelle Di Russo,  
Associate Conductor  
*The Lucy Moore Ruffin Chair*

## Violin I

Brian Reagin, Concertmaster  
*The Annabelle Lundy Fetterman  
Chair*

Jessica Hung,  
Associate Concertmaster  
*The Assad Meymandi and Family  
Chair*

Anna Black,  
Assistant Concertmaster  
*The Anne Heartt Gregory Chair*

Karen Strittmatter Galvin,  
Assistant Concertmaster

Carol Chung\*

Emily Rist Glover  
*The Jessie Wyatt Ethridge Chair*

Paul Goldsberry  
*The Richard and Joy Cook Chair*

So Yun Kim\*\*  
*The Governor James B. Hunt, Jr.  
Chair*

Maria Meyer  
*The Tom and Mary Mac  
Bradshaw Chair*

Pablo Sánchez Pazos  
*The Phyllis ("Pat") Conrad Wells  
Chair*

Jessica Ryou  
*The James C. Byrd and Family  
Chair*

Lin-Ti Wang\*

Eileen Wynne  
*The Harvey At-Large Chair*

Erin Zehngut  
*The J. Felix Arnold Chair*

## Violin II

Jacqueline Saed Wolborsky,  
Principal  
*The Nancy Finch Wallace Chair*

Tiffany Kang,  
Associate Principal  
*The Blanche Martin Shaw Chair*

David Kilbride, Assistant  
Principal

Qi Cao  
Janet Gayer Hall

Chris Jusell\*  
Leah Latorraca\*  
Oskar Ozolinch  
Jeanine Wynton

## Viola

Samuel Gold, Principal  
*The Florence Spinks and Charles  
Jacob Cate and Alma Yondorf  
and Sylvan Hirschberg Chair*

Kurt Tseng,  
Associate Principal  
*The Betty Ellen Madry Chair*

Brian Sherwood,  
Assistant Principal

Petra Berényi

Paul Malcolm

Amy Mason  
*The J. Sidney Kirk Chair*

Daniel Moore

Sandra Schwarcz  
*The Samuel H. and Anne Latham  
Johnson Chair*

## Cello

Bonnie Thron, Principal  
*The June and Tom Roberg Chair*

Elizabeth Beilman,  
Associate Principal  
*The Sarah Carlyle Herbert Dorroh  
Chair*

Peng Li, Assistant Principal,  
*Anonymously Endowed*

Yewon Ahn  
*Anonymously Endowed*

David Meyer  
*The Nell Hirschberg Chair*

Marc Moskowitz\*  
*The William Charles Rankin  
Chair*

Lisa Howard Shaughnessy  
*The Sara Wilson Hodgkins Chair*

Nathaniel Yaffe  
*The Secretary of Cultural  
Resources Betty Ray McCain  
Chair*

## Double Bass

Leonid Finkelshteyn, Principal  
*The Martha and Peyton  
Woodson Chair*

Bruce Ridge\*,  
Associate Principal  
*The John C. and Margaret P.  
Parker Chair*

Craig Brown  
*The Mark W. McClure Foundation  
Chair*

Erik Dyke  
*The Harlee H. and Pauline G.  
Jobe Chair*

John Spuller\*  
*The Dr. and Mrs. Preston H. Gada  
Chair*

## Flute

Anne Whaley Laney, Principal  
*The Mr. and Mrs. George M.  
Stephens Chair*

Mary E. Boone,  
Assistant Principal  
*The Dr. and Mrs. Shaler Stidham,  
Jr. Chair*

Vaynu Kadiyali\*  
*The Jack and Sing Boddie Chair*

## Piccolo

Vaynu Kadiyali\*  
*The Jean Dunn Williams Chair*

## Oboe

Melanie Wilsden, Principal  
*The Hardison and Stoltze Chair*

Joseph Peters,  
Associate Principal,  
*The Lizette T. Dunham Chair*

Rachel Ahn\*  
*The Clarence and Alice Aycock  
Poe Chair*

## English Horn

Joseph Peters  
*The Bruce and Margaret King Chair*

## Clarinet

Samuel Almaguer, Principal  
*The Mr. and Mrs. J. Christopher Walker, II Chair*

Sammy Lesnick,  
Assistant Principal  
*The Kathryn Powell and Green Flavia Cooper Chair*

## Bassoon

Aaron Apaza, Principal  
*The Mr. and Mrs. Fitzgerald S. Hudson Chair*

Wenmin Zhang,  
Assistant Principal,  
*The Beethoven Chair*

## French Horn

Rebekah Daley, Principal  
*The Mary T. McCurdy Chair*

Kimberly Van Pelt,  
Associate Principal  
*The Paul R. Villard and Gabriel Wolf Chair*

Corbin Castro\*  
*The Roger Colson and Bobbi Lyon Hackett Chair*

Gabriel Mairson\*  
*The James Marion Poyner Chair*

To Be Filled  
*The Mary Susan Kirk Fulghum Chair*

## Trumpet

Paul Randall, Principal  
*The George Smedes Poyner Chair*

Clinton McLendon,  
Associate Principal  
*The Henry and Martha Zaytoun and Family Chair*

## Trombone

John Ilika, Principal  
*The Thomas Warwick Steed, Jr. Family Chair*

Steven Osborne\*, Assistant Principal

Jonathan Randazzo\*\*,  
Assistant Principal  
*The Frances Armour Bryant Chair*

## Bass Trombone

Matthew Neff  
*Anonymously Endowed*

## Tuba

Seth Horner, Principal  
*The Governor and Mrs. James G. Martin, Jr. Chair*

## Harp

Anita Burroughs-Price  
Vonda Darr

## Timpani

Colin Hartnett, Principal  
*The Patricia R., Steven T. and George F. Hackney III Chair*

## Percussion

Richard Motylinski, Principal  
*The Margery and Earl Johnson, Jr. Chair*

Rajesh Prasad,  
Assistant Principal  
*The Abram and Frances Pascher Kanof Chair*

## Organ

To Be Filled  
*The Albert and Susan Jenkins and Family Organ Chair*

## Library

Stephanie Wilson, Principal  
Orchestra Librarian  
*The Mary Colvert and Banks C. Talley Chair*

Taylor Troyer,  
Assistant Orchestra Librarian

\*Acting position

\*\*Leave of absence

**Named musician chairs are made possible through very meaningful gifts to the Symphony's endowment. As such, these donor families are also members of the Lamar Stringfield Society.**

*All string players rotate stands on a periodic basis in each section with the exception of titled players: Principals, Associate Principals, and Assistant Principals.*

*The North Carolina Symphony is a member of the League of American Orchestras and the International Conference of Symphony and Opera Musicians.*

*The North Carolina Master Chorale is the Resident Chorus of the North Carolina Symphony.*

*The North Carolina Symphony Foundation gratefully acknowledges the generous gift of the Lupot violin from Arnold and Zena† Lerman.*

*†deceased*