

NORTH CAROLINA  
**SYMPHONY**



UNC HEALTH PRESENTS

# SUMMERFEST

## DISCO FEVER

SATURDAY, JULY 9, 2022 | 8PM

Koka Booth Amphitheatre, Cary



PRESENTED BY



SERIES  
SPONSORED BY



The North Carolina Symphony gratefully acknowledges financial support from Wake County, the Town of Cary, and the State of North Carolina.

PICNIC OF THE WEEK PARTNER



TOWN of CARY

# NORTH CAROLINA SYMPHONY

## Disco Fever

UNC Health Summerfest

Sat, July 9, 2022 | 8pm  
KOKA BOOTH AMPHITHEATRE, CARY

The North Carolina Symphony gratefully acknowledges  
the support of Concert Sponsor **RGA Investments**.



## Program

---

**North Carolina Symphony**  
**Enrico Lopez-Yañez**, conductor  
**Maiya Sykes**, vocals  
**B.Slade**, vocals

*Arrangements by Enrico Lopez-Yañez*

**Devonne Fowlkes**, background vocals  
**Kiley Phillips**, background vocals  
**Wil Merrell**, background vocals  
**Dave Baker**, guitar  
**Brandon Shaw**, bass  
**Jordan Perlson**, drums

**Anita Pointer, June Pointer, Ruth Pointer,  
and Trevor Lawrence**  
"I'm So Excited"  
As recorded by the **Pointer Sisters**

**Frederick Knight**  
"Ring My Bell"  
As recorded by **Anita Ward**

### KC and the Sunshine Band Medley

**Harry Wayne Casey and Richard Finch**  
"That's the Way (I Like It)"  
As recorded by **KC and the Sunshine Band**

**Van McCoy**  
"The Hustle"  
As recorded by **Van McCoy and the Soul City  
Symphony**

### Kool and the Gang Medley

**Freddie Perren and Dino Fekaris**  
"I Will Survive"  
As recorded by **Gloria Gaynor**

### Bee Gees Medley

**Bernard Edwards and Nile Rodgers**  
"I'm Coming Out"  
As recorded by **Diana Ross**

**Leroy Green and Ron Kersey**  
"Disco Inferno"  
As recorded by the **Trammps**

**Lionel Richie, Milan Williams, Walter Orange,  
Ronald LaPread, Thomas McClary, and William King**  
"Brick House"  
As recorded by the **Commodores**

### Donna Summer Medley

---

For the complete program, text the word **program** to 919.364.6864 or scan this QR code with your phone:



## About the Artists

---



### Enrico Lopez-Yañez

---

conductor

*Tonight is the Summerfest debut of Enrico Lopez-Yañez. He conducted the Symphony in Meymandi Concert Hall in February, 2022, leading Dancing in the Street: The Music of Motown.*

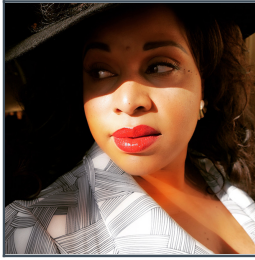
---

Enrico Lopez-Yañez is the Principal Pops Conductor of the Nashville Symphony. Also an active composer/arranger, he has been commissioned to write for the Cincinnati Pops Orchestra and the Houston Symphony and has had his works performed by the Detroit Symphony Orchestra, Seattle Symphony, Fort Worth Symphony Orchestra, and Utah Symphony, among other orchestras.

With the Nashville Symphony, Lopez-Yañez has appeared with a broad spectrum of artists and conducts many concerts on the symphony's Movie Series. He also conducts the annual *Let Freedom Sing! Music City July 4th* fireworks show, which was first televised on CMT in 2019.

In the upcoming season, Lopez-Yañez will collaborate with artists including Aida Cuevas, The Beach Boys, Ben Folds, Renée Elise Goldsberry, and Vanesa Williams. He will appear with the Baltimore Symphony Orchestra, Buffalo Philharmonic Orchestra, Pittsburgh Symphony Orchestra, Seattle Symphony, and The Phoenix Symphony. Previously, he has appeared with orchestras including the Aguascalientes Symphony Orchestra, National Symphony Orchestra, Cincinnati Pops Orchestra, Edmonton Symphony Orchestra, and Oklahoma City Philharmonic, among others.

As Artistic Director and Co-Founder of Symphonica Productions, LLC, Lopez-Yañez curates and leads programs designed to cultivate new audiences. His work as a producer, composer, and arranger can be heard on albums including the UNESCO benefit album *Action Moves People United* as well as children's music albums including *The Spaceship that Fell in My Backyard*, winner of the John Lennon Songwriting Contest, Hollywood Music in Media Awards, and Family Choice Awards; and *Kokowanda Bay*, winner of an INMA Global Media Award and a Parents' Choice Award.



## Maiya Sykes

---

vocals

*Maiya Sykes makes her North Carolina Symphony debut with this concert.*

---

Maiya Sykes is a classically trained vocalist, producer, vocal arranger, and entrepreneur. After graduating from Yale University, she went on to study international political science at Oxford and keyboard performance at the Musicians' Institute.

Sykes has provided back-up vocals for Macy Gray, Rod Wave, Lil Durk, Wayne Brady, Fantasia, Joss Stone, Michael Bublé, Everlast, Avril Lavigne, and My Morning Jacket. She was a featured backup singer for Macy Gray in her live show for more than five years. Her background vocals have been featured in many films, including the Oscar award-winning film *La La Land* and *Dolomite Is My Name*, and in the Netflix series *Waffles + Mochi*.

Shortly after her four-chair-turning debut on season seven of NBC's *The Voice*, Sykes began working with two groups that became YouTube sensations: Postmodern Jukebox and Scary Pockets. Her featured videos with both groups have received over five million views and have been mentioned in *Time Magazine* and *HuffPost*.

Current and upcoming projects include an album of all-original music.



## B.Slade

---

vocals

*B.Slade makes his North Carolina Symphony debut with this concert.*

---

A two-time Emmy Award-winner and four-time Grammy nominee, B.Slade is a singer, songwriter, producer, and actor who has worked with stars from Janet Jackson and Patti Labelle to Snoop Dogg. He plays multiple instruments and has written and produced more than 400 songs.

B.Slade has written or produced for artists including Sheila E ("Fiesta" in 2013 and "Bailar" in 2020), Chaka Khan ("I Love Myself"), Snoop Dogg ("Words Are Few" and other tracks on the Gospel album *Bible of Love*), Faith Evans ("Paradise"), and Angie Fisher (her 2014 debut single "I.R.S." garnered Fisher's first Grammy nomination and his third). He has also collaborated with artists such as Chris Brown, Kanye West, Janet Jackson, Ty Dolla Sign, Ledisi, Eric Benet, and many more.

B.Slade penned the theme song and incidental music for the OWN Network TV Series *Flex & Shanice*, starring husband and wife Flex Alexander and Shanice Wilson. He also wrote and co-produced Shanice's songs "Gotta Blame Me" and "We Can Fly," which appeared on the series; both songs feature him on co-lead vocals. He also co-wrote and co-performed with Shanice the theme song to the TV show *One on One* (also starring Flex Alexander), which was recently added to Netflix's programming.

## About Our Musicians

---

Grant Llewellyn, Music Director Laureate  
*The Maxine and Benjamin Swalin Chair*

Carlos Miguel Prieto, Artistic Advisor

Michelle Di Russo, Associate Conductor  
*The Lucy Moore Ruffin Chair*

### Violin I

Brian Reagin, Concertmaster  
*The Annabelle Lundy Fetterman Chair*

Dovid Friedlander\*\*, Associate  
Concertmaster  
*The Assad Meymandi and Family Chair*

Emily Rist Glover\*, Associate  
Concertmaster  
*The Anne Heartt Gregory Chair*

Karen Strittmatter Galvin\*\*, Assistant  
Concertmaster

Erin Zehngut\*, Assistant Concertmaster

Robert Anemone\*\*

Carol Chung\*  
*The James C. Byrd and Family Chair*

Paul Goldsberry  
*The Richard and Joy Cook Chair*

Tessa Gotman\*

So Yun Kim  
*The Governor James B. Hunt, Jr. Chair*

Marilyn Kouba  
*The Phyllis ("Pat") Conrad Wells Chair*

Leah Latorraca\*

Maria Meyer\*\*  
*The Tom and Mary Mac Bradshaw Chair*

Irina Shelepov\*

Lin-Ti Wang\*  
*The Jessie Wyatt Ethridge Chair*

Eileen Wynne  
*The Harvey At-Large Chair*

To Be Filled  
*The J. Felix Arnold Chair*

*The North Carolina Symphony Foundation  
gratefully acknowledges the generous gift of  
the Lupot violin from Arnold and Zenat Lerman.*

*†deceased*

### Violin II

Jacqueline Saed Wolborsky, Principal  
*The Nancy Finch Wallace Chair*

David Kilbride\*, Associate Principal  
*The Blanche Martin Shaw Chair*

Anton Shelepov\*, Assistant Principal

Qi Cao

Janet Gayer Hall

Mallory Hayes\*

Oskar Ozolinch

Pablo Sánchez Pazos\*

Jeanine Wynton

### Viola

Samuel Gold, Principal  
*The Florence Spinks and Charles Jacob  
Cate and Alma Yondorf and Sylvan  
Hirschberg Chair*

Kurt Tseng, Associate Principal  
*The Betty Ellen Madry Chair*

To Be Filled, Assistant Principal

Petra Berényi

Celia Daggy\*

Paul Malcolm

Amy Mason  
*The J. Sidney Kirk Chair*

Sandra Schwarcz  
*The Samuel H. and Anne Latham Johnson  
Chair*

### Cello

Bonnie Thron, Principal  
*The June and Tom Roberg Chair*

Elizabeth Beilman, Associate Principal  
*The Sarah Carlyle Herbert Dorroh Chair*

Peng Li, Assistant Principal  
*Anonymously Endowed*

Yewon Ahn  
*Anonymously Endowed*

Sunrise Kim\*\*  
*The William Charles Rankin Chair*

David Meyer  
*The Nell Hirschberg Chair*

Lisa Howard Shaughnessy  
*The Sara Wilson Hodgkins Chair*

Nathaniel Yaffe  
*The Secretary of Cultural Resources  
Betty Ray McCain Chair*

### Double Bass

Leonid Finkelshteyn, Principal  
*The Martha and Peyton Woodson Chair*

Robert K. Anderson, Associate Principal  
*The Dr. and Mrs. Preston H. Gada Chair*

Craig Brown  
*The Mark W. McClure Foundation Chair*

Erik Dyke  
*The Harllee H. and Pauline G. Jobe Chair*

Bruce Ridge  
*The John C. and Margaret P. Parker Chair*

### Flute

Anne Whaley Laney, Principal  
*The Mr. and Mrs. George M. Stephens  
Chair*

Mary E. Boone, Assistant Principal  
*The Dr. and Mrs. Shaler Stidham, Jr. Chair*

Elizabeth Anderton Lunsford  
*The Jack and Sing Boddie Chair*

### Piccolo

Elizabeth Anderton Lunsford  
*The Jean Dunn Williams Chair*



## Oboe

Melanie Wilsden, Principal  
*The Hardison and Stoltze Chair*

Joseph Peters, Associate Principal  
*The Lizette T. Dunham Chair*

Sandra Posch  
*The Clarence and Alice Aycock Poe Chair*

## English Horn

Joseph Peters  
*The Bruce and Margaret King Chair*

## Clarinet

Samuel Almaguer, Principal  
*The Mr. and Mrs. J. Christopher Walker, II Chair*

Matthew Griffith\*, Assistant Principal  
*The Kathryn Powell and Green Flavie Cooper Chair*

## Bassoon

Aaron Apaza, Principal  
*The Mr. and Mrs. Fitzgerald S. Hudson Chair*

Wenmin Zhang, Assistant Principal  
*The Beethoven Chair*

## French Horn

Rebekah Daley, Principal  
*The Mary T. McCurdy Chair*

Kimberly Van Pelt, Associate Principal  
*The Paul R. Villard and Gabriel Wolf Chair*

Corbin Castro\*  
*The Roger Colson and Bobbi Lyon Hackett Chair*

Christopher Caudill\*\*

Rachel Niketopoulos\*\*

Tanner West\*  
*The James Marion Poyner Chair*

To Be Filled  
*The Mary Susan Kirk Fulghum Chair*

## Trumpet

Paul Randall, Principal  
*The George Smedes Poyner Chair*

David Dash\*, Associate Principal  
*The Henry and Martha Zaytoun and Family Chair*

## Trombone

John Ilika, Principal  
*The Thomas Warwick Steed, Jr. Family Chair*

Jonathan Randazzo, Assistant Principal  
*The Frances Armour Bryant Chair*

## Bass Trombone

Matthew Neff  
*Anonymously Endowed*

## Tuba

Seth Horner, Principal  
*The Governor and Mrs. James G. Martin, Jr. Chair*

## Harp

Anita Burroughs-Price

Vonda Darr

## Timpani

Colin Hartnett, Principal  
*The Patricia R., Steven T. and George F. Hackney III Chair*

## Percussion

Richard Motylinski, Principal  
*The Margery and Earl Johnson, Jr. Chair*

Rajesh Prasad, Assistant Principal  
*The Abram and Frances Pascher Kanof Chair*

## Organ

To Be Filled  
*The Albert and Susan Jenkins and Family Organ Chair*

## Library

Stephanie Wilson, Principal Orchestra Librarian  
*The Mary Colvert and Banks C. Talley Chair*

\*Acting position

\*\*Leave of absence

*Named musician chairs are made possible through very meaningful gifts to the Symphony's endowment. As such, these donor families are also members of the Lamar Stringfield Society.*

*All string players rotate stands on a periodic basis in each section with the exception of titled players: Principals, Associate Principals, and Assistant Principals.*

*The North Carolina Symphony is a member of the League of American Orchestras and the International Conference of Symphony and Opera Musicians.*

*The North Carolina Master Chorale is the Resident Chorus of the North Carolina Symphony.*

**Thank you** to the generous individuals, businesses, foundations, and community partners who support the North Carolina Symphony through contributions each season. The Symphony's performances and extensive music education and community service programs are made possible by your support.