

NORTH CAROLINA
SYMPHONY



UNC HEALTH PRESENTS

SUMMERFEST

WE WILL ROCK YOU: THE MUSIC OF QUEEN

SUNDAY, JUNE 26, 2022 | 8PM

Koka Booth Amphitheatre, Cary



PRESENTED BY



SERIES
SPONSORED BY



The North Carolina Symphony gratefully acknowledges financial support from Wake County, the Town of Cary, and the State of North Carolina.

PICNIC OF THE WEEK PARTNER



TOWN of CARY

NORTH CAROLINA SYMPHONY

We Will Rock You:

The Music of Queen

UNC Health Summerfest

Sun June 26, 2022 | 8pm

KOKA BOOTH AMPHITHEATRE, CARY

*The North Carolina Symphony gratefully
acknowledges the support of Concert Sponsor*
Highwoods Properties.



*The North Carolina Symphony gratefully
acknowledges the support of Concert Sponsor*
Raleigh Windows and Siding.



Program

North Carolina Symphony

Michael Runyan, conductor

MiG Ayesa, vocals

Steve Zukowsky, guitar

Danny Miranda, bass

Bob Habib, drums

Adam Michaelson, keyboards

Ann Marie Nacchio, backing vocals

Selections will be announced from the stage

For the complete program, text the word **program** to 919.364.6864 or scan this QR code with your phone:



About the Artists



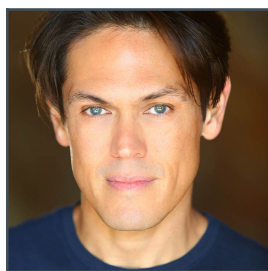
Michael Runyan

conductor

Michael Runyan has been making music as a composer, arranger, performer, and conductor for many years. He was born in San Diego and raised in Denver, where he began piano lessons at age six and started playing trumpet and horn in grade school.

During high school, Runyan began composing and arranging, a discipline he pursued at Brigham Young University and the University of Cincinnati College-Conservatory of Music, ultimately receiving a doctoral degree. He has created hundreds of compositions and arrangements (many in collaboration with his wife Pamela), contributing to the orchestral and choral repertoires.

Runyan and his wife currently reside in Nashville and have four children.



MiG Ayesa

vocals

MiG Ayesa started his career in Australia in *Buddy*. He was then chosen to join the London cast, including a Royal Variety Performance for Her Majesty, Queen Elizabeth II. Other West End credits include *We Will Rock You*, *Rent*, *Thriller Live*, and *Seasons of Larson*.

Broadway credits include *Burn the Floor* and *Rock of Ages*, which he also joined on the first U.S. national tour and in the Philippines. In Australia, his credits include *Grease*, *Cinderella*, *Aladdin*, *West Side Story*, *Rent*, *Fame*, *The Music of Andrew Lloyd Webber*, and a U.K. and Australian Tour of *The Music of Queen: Rock and Symphonic Spectacular*. He reprised the role of "Galileo" for the 10th Anniversary World Arena Tour of *We Will Rock You* and appeared as one of the "Tenors of Rock" at their resident headline show in Las Vegas and on the high seas. He also sailed with *Rock Rhapsody* as well as headlining his own one-man show, *MiG Rocks the Boat*.

In the Philippines, Ayesa played "Robert Kincaid" in the first international production of *The Bridges of Madison County* and starred with Lea Salonga and Tanya Manalang for the concert event *Curtains Up*, as well as in his own concert celebrating Shangri-la's 25th Anniversary. He most recently originated the role of "Jamie Crimson" in the World Premiere Production of *All Out of Love*.

Ayesa starred as "Joe King" in the TV series *The Ferals*. His other TV credits include *Fil It Up*, *Mission Top Secret*, *Hits and Memories*, *Midday*, *In Melbourne Tonight*, *Carols in the Domain*, *It's About Time*, *Carols by Candlelight*, and the People's Choice Awards, as well as various commercials including a global campaign for Ray-Ban.

Ayesa's film credits include *Queen of the Damned* and *Subterano*. A finalist in the global TV show *Rockstar: INXS*, he released his self-titled debut album through Decca/Universal and was an original cast member of *Handel's Messiah Rocks: A Joyful Noise*. As well as releasing his second album *More Than Ever*, he has penned theme songs for various TV shows as well as writing "Fill My Cup" for FWD Insurance Philippines, along with his own fundraising awareness campaign for the victims of Philippine floods, *United As One*.

About Our Musicians

Grant Llewellyn, Music Director Laureate
The Maxine and Benjamin Swalin Chair

Carlos Miguel Prieto, Artistic Advisor

Michelle Di Russo, Associate Conductor
The Lucy Moore Ruffin Chair

Violin I

Brian Reagin, Concertmaster
The Annabelle Lundy Fetterman Chair

Dovid Friedlander**, Associate
Concertmaster
The Assad Meymandi and Family Chair

Emily Rist Glover*, Associate
Concertmaster
The Anne Heartt Gregory Chair

Karen Strittmatter Galvin**, Assistant
Concertmaster

Erin Zehngut*, Assistant Concertmaster

Robert Anemone**

Carol Chung*
The James C. Byrd and Family Chair

Paul Goldsberry
The Richard and Joy Cook Chair

Tessa Gotman*

So Yun Kim
The Governor James B. Hunt, Jr. Chair

Marilyn Kouba
The Phyllis ("Pat") Conrad Wells Chair

Leah Latorraca*

Maria Meyer**
The Tom and Mary Mac Bradshaw Chair

Irina Shelepov*

Lin-Ti Wang*
The Jessie Wyatt Ethridge Chair

Eileen Wynne
The Harvey At-Large Chair

To Be Filled
The J. Felix Arnold Chair

*The North Carolina Symphony Foundation
gratefully acknowledges the generous gift of
the Lupot violin from Arnold and Zena† Lerman.*

†deceased

Violin II

Jacqueline Saed Wolborsky, Principal
The Nancy Finch Wallace Chair

David Kilbride*, Associate Principal
The Blanche Martin Shaw Chair

Anton Shelepov*, Assistant Principal

Qi Cao

Janet Gayer Hall

Mallory Hayes*

Oskar Ozolinch

Pablo Sánchez Pazos*

Jeanine Wynton

Viola

Samuel Gold, Principal
*The Florence Spinks and Charles Jacob
Cate and Alma Yondorf and Sylvan
Hirschberg Chair*

Kurt Tseng, Associate Principal
The Betty Ellen Madry Chair

To Be Filled, Assistant Principal

Petra Berényi

Celia Daggy*

Paul Malcolm

Amy Mason
The J. Sidney Kirk Chair

Sandra Schwarcz
*The Samuel H. and Anne Latham Johnson
Chair*

Cello

Bonnie Thron, Principal
The June and Tom Roberg Chair

Elizabeth Beilman, Associate Principal
The Sarah Carlyle Herbert Dorroh Chair

Peng Li, Assistant Principal
Anonymously Endowed

Yewon Ahn
Anonymously Endowed

Sunrise Kim**
The William Charles Rankin Chair

David Meyer
The Nell Hirschberg Chair

Lisa Howard Shaughnessy
The Sara Wilson Hodgkins Chair

Nathaniel Yaffe
*The Secretary of Cultural Resources
Betty Ray McCain Chair*

Double Bass

Leonid Finkelshteyn, Principal
The Martha and Peyton Woodson Chair

Robert K. Anderson, Associate Principal
The Dr. and Mrs. Preston H. Gada Chair

Craig Brown
The Mark W. McClure Foundation Chair

Erik Dyke
The Harllee H. and Pauline G. Jobe Chair

Bruce Ridge
The John C. and Margaret P. Parker Chair

Flute

Anne Whaley Laney, Principal
*The Mr. and Mrs. George M. Stephens
Chair*

Mary E. Boone, Assistant Principal
The Dr. and Mrs. Shaler Stidham, Jr. Chair

Elizabeth Anderton Lunsford
The Jack and Sing Boddie Chair

Piccolo

Elizabeth Anderton Lunsford
The Jean Dunn Williams Chair

Oboe

Melanie Wilsden, Principal
The Hardison and Stoltze Chair

Joseph Peters, Associate Principal
The Lizette T. Dunham Chair

Sandra Posch
The Clarence and Alice Aycock Poe Chair

English Horn

Joseph Peters
The Bruce and Margaret King Chair

Clarinet

Samuel Almaguer, Principal
The Mr. and Mrs. J. Christopher Walker, II Chair

Matthew Griffith*, Assistant Principal
The Kathryn Powell and Green Flavie Cooper Chair

Bassoon

Aaron Apaza, Principal
The Mr. and Mrs. Fitzgerald S. Hudson Chair

Wenmin Zhang, Assistant Principal
The Beethoven Chair

French Horn

Rebekah Daley, Principal
The Mary T. McCurdy Chair

Kimberly Van Pelt, Associate Principal
The Paul R. Villard and Gabriel Wolf Chair

Corbin Castro*
The Roger Colson and Bobbi Lyon Hackett Chair

Christopher Caudill**

Rachel Niketopoulos**

Tanner West*
The James Marion Poyner Chair

To Be Filled
The Mary Susan Kirk Fulghum Chair

Trumpet

Paul Randall, Principal
The George Smedes Poyner Chair

David Dash*, Associate Principal
The Henry and Martha Zaytoun and Family Chair

Trombone

John Ilika, Principal
The Thomas Warwick Steed, Jr. Family Chair

Jonathan Randazzo, Assistant Principal
The Frances Armour Bryant Chair

Bass Trombone

Matthew Neff
Anonymously Endowed

Tuba

Seth Horner, Principal
The Governor and Mrs. James G. Martin, Jr. Chair

Harp

Anita Burroughs-Price

Vonda Darr

Timpani

Colin Hartnett, Principal
The Patricia R., Steven T. and George F. Hackney III Chair

Percussion

Richard Motylinski, Principal
The Margery and Earl Johnson, Jr. Chair

Rajesh Prasad, Assistant Principal
The Abram and Frances Pascher Kanof Chair

Organ

To Be Filled
The Albert and Susan Jenkins and Family Organ Chair

Library

Stephanie Wilson, Principal Orchestra Librarian
The Mary Colvert and Banks C. Talley Chair

*Acting position

**Leave of absence

Named musician chairs are made possible through very meaningful gifts to the Symphony's endowment. As such, these donor families are also members of the Lamar Stringfield Society.

All string players rotate stands on a periodic basis in each section with the exception of titled players: Principals, Associate Principals, and Assistant Principals.

The North Carolina Symphony is a member of the League of American Orchestras and the International Conference of Symphony and Opera Musicians.

The North Carolina Master Chorale is the Resident Chorus of the North Carolina Symphony.

Thank you to the generous individuals, businesses, foundations, and community partners who support the North Carolina Symphony through contributions each season. The Symphony's performances and extensive music education and community service programs are made possible by your support.