

NORTH CAROLINA
SYMPHONY

A HARRY POTTER HOLIDAY

WED, NOV 22, 2023 | 4PM

FRI, NOV 24, 2023 | 3PM

SAT, NOV 25, 2023 | 3PM

MEYMANDI CONCERT HALL, WOOLNER STAGE
RALEIGH

North Carolina Symphony
Michelle Di Russo, conductor



**Martin
Marietta**
Center for the
Performing Arts

PROGRAM

John Williams

Hedwig's Theme from *Harry Potter Suite* for
Orchestra

John Williams

Harry's Wondrous World

John Williams

Harry Potter and the Prisoner of Azkaban: Suite
for Orchestra
The Knight Bus
Witches, Wands, and Wizards

John Williams

Harry Potter and the Chamber of Secrets:
Suite for Orchestra
Fawkes the Phoenix
The Chamber of Secrets

Traditional / Arr. Russell Peterson

The 12 Days of Christmas

Various Composers / Arr. Jerry Brubaker

How the Grinch Stole Christmas

INTERMISSION

John Williams

Nimbus 2000 from *Harry Potter and the
Sorcerer's Stone: Suite* for Orchestra

John Williams / Arr. Gary Fry

Buckbeak's Flight from *Harry Potter
Symphonic Suite*

Patrick Doyle

Harry in Winter from *Harry Potter and the
Goblet of Fire*

John Williams / Arr. Gary Fry

Harry Potter Symphonic Suite

Hogwarts' Hymn

Hogwarts' March

Fireworks

The Flight of the Order of the Phoenix

Harry & Hermione

Obliviate

Lily's Theme

Courtyard Apocalypse

Mischief Managed

Harry's Wondrous World

Lee Norris

Christmas "Pop" Sing-A-Long No. 1

CONCERT
SPONSORS

 **Highwoods**


PUBLIX SUPER MARKETS
CHARITIES

Residence INN
BY HARRIOTT
Raleigh
Downtown

YOUNG PEOPLES
CONCERT SERIES
SPONSOR


WakeMed
Children's

NORTH CAROLINA **SYMPHONY**

SING-ALONG

Winter Wonderland

Sleigh bells ring, are you list'ning?
In the lane, snow is glist'ning,
A beautiful sight,
we're happy tonight,
Walkin' in a winter wonderland.

Gone away is the bluebird,
Here to stay is the new bird;
He sings a love song,
as we go along,
Walkin' in a winter wonderland.

In the meadow we can build a snowman,
Then pretend that he is Parson Brown;
He'll say, "Are you married?" We'll say,
 "No, man!
But you can do the job when you're in town."

Later on, we'll conspire,
As we dream by the fire,
To face unafraid,
the plans that we made,
Walkin' in a winter wonderland.

Frosty the Snowman

Frosty the snowman was a jolly happy soul,
With a corncob pipe and a button nose
And two eyes made of coal.

Frosty the snowman is a fairy tale they say,
He was made of snow but the children know
How he came to life one day.

There must have been some magic
In that old silk hat they found.
For when they placed it on his head
He began to dance around.

Oh, Frosty the snowman
Was alive as he could be
And the children say he could laugh and play
Just the same as you and me.

Rudolph the Red-Nosed Reindeer

Rudolph the red-nosed reindeer
Had a very shiny nose,
And if you ever saw it,
You would even say it glows.

All of the other reindeer
Used to laugh and call him names.
They never let poor Rudolph
Join in any reindeer games.

Then one foggy Christmas Eve,
Santa came to say:
"Rudolph, with your nose so bright,
Won't you guide my sleigh tonight?"

Then all the reindeer loved him,
As they shouted out with glee:
"Rudolph the red-nosed reindeer,
You'll go down in history."

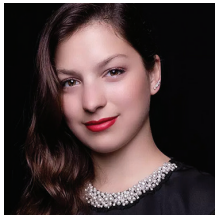
White Christmas

I'm dreaming of a white Christmas
Just like the ones I used to know,
Where the treetops glisten and
children listen
To hear sleigh bells in the snow.

I'm dreaming of a white Christmas
With ev'ry Christmas card I write:
"May your days be merry and bright
And may all your Christmases be white."



About the Artists



Michelle Di Russo, *conductor*

The Lucy Moore Ruffin Chair

Michelle Di Russo is Associate Conductor of the North Carolina Symphony where she is responsible for conducting the Symphony's extensive statewide music education concerts.

She has conducted UNC Health Summerfest performances, Young People's Concerts, and Statewide Holiday Pops concerts with the Symphony, as well as classical subscription performances in Chapel Hill and Wilmington.

A graceful and powerful force on the podium, Michelle Di Russo is known for her compelling interpretations, passionate musicality, and championing of contemporary music. She has recently been appointed a 2023/24 Dudamel Fellow with the Los Angeles Philharmonic and participated at the Lucerne Festival Academy. An advocate for underrepresented artists, she co-founded the organization Girls Who Conduct to support younger generations of women and non-binary conductors.

Di Russo's artistic journey began in her native country, Argentina, at the age of three with ballet lessons, followed by studies in voice and piano. She has acted on television and onstage. Di Russo holds multiple degrees in Orchestral Conducting from Pontifical Catholic University of Argentina, University of Kentucky (M.M.), and Arizona State University (D.M.A.). She is a former Freeman Conducting Fellow in Chicago Sinfonietta's prestigious Project Inclusion program and a recipient of the Concert Artists Guild's Richard S. Weinert Award.

Previously, Di Russo served as Interim Director of Orchestras at Cornell University, Assistant Conductor for the Phoenix Youth Symphony Orchestra, cover conductor and assistant for The Phoenix Symphony and Arizona Musicfest, and as a conducting fellow at the Cortona Sessions for New Music in Italy. She has also acted as cover conductor for the Minnesota Orchestra, St. Louis Symphony Orchestra, San Diego Symphony, and the National Symphony Orchestra. In the summer of 2022, she served as the Joel Revzen Conducting Fellow at Festival Napa Valley.

Workplace Magic
Highwoods
PROUD SPONSOR OF THE NORTH CAROLINA SYMPHONY
#BETTERTOGETHER

**A PASSION FOR
PEDIATRIC CARE
AND CARING.**
What's not to love?
**WakeMed
Children's**
> **LEARN MORE**

**NORTH CAROLINA
SYMPHONY**
**HOLIDAY
POPS**
TUE, NOV 28
CHAPEL HILL
FRI/SAT, DEC 8-9
RALEIGH
TUE, DEC 19
SOUTHERN PINES
Martin Marietta
Center for the Performing Arts

The Musicians of the North Carolina Symphony

Carlos Miguel Prieto,
Music Director
*The Maxine and
Benjamin Swalin
Chair*

Grant Llewellyn,
Music Director Laureate

Michelle Di Russo,
Associate Conductor
The Lucy Moore Ruffin Chair

Violin I

Brian Reagin, Concertmaster
*The Annabelle Lundy Fetterman
Chair*

Jessica Hung,
Associate Concertmaster
*The Assad Meymandi and Family
Chair*

Anna Black,
Assistant Concertmaster
The Anne Heartt Gregory Chair

Karen Strittmatter Galvin,
Assistant Concertmaster

Carol Chung*

Emily Rist Glover
The Jessie Wyatt Ethridge Chair

Paul Goldsberry
The Richard and Joy Cook Chair

So Yun Kim**
*The Governor James B. Hunt, Jr.
Chair*

Maria Meyer
*The Tom and Mary Mac
Bradshaw Chair*

Pablo Sánchez Pazos
*The Phyllis ("Pat") Conrad Wells
Chair*

Jessica Ryou
*The James C. Byrd and Family
Chair*

Lin-Ti Wang*

Eileen Wynne
The Harvey At-Large Chair

Erin Zehngut
The J. Felix Arnold Chair

Violin II

Jacqueline Saed Wolborsky,
Principal
The Nancy Finch Wallace Chair

Tiffany Kang,
Associate Principal
The Blanche Martin Shaw Chair

David Kilbride, Assistant
Principal

Qi Cao

Janet Gayer Hall

Chris Jusell*

Leah Latorraca*

Oskar Ozolinch

Jeanine Wynton

Viola

Samuel Gold, Principal
*The Florence Spinks and Charles
Jacob Cate and Alma Yondorf
and Sylvan Hirschberg Chair*

Kurt Tseng,
Associate Principal
The Betty Ellen Madry Chair

Brian Sherwood,
Assistant Principal

Petra Berényi

Paul Malcolm

Amy Mason
The J. Sidney Kirk Chair

Sandra Schwarcz
*The Samuel H. and Anne Latham
Johnson Chair*

Kirsten Swanson*

Cello

Bonnie Thron, Principal
The June and Tom Roberg Chair

Elizabeth Beilman,
Associate Principal
*The Sarah Carlyle Herbert Dorroh
Chair*

Peng Li, Assistant Principal,
Anonymously Endowed

Yewon Ahn
Anonymously Endowed

David Meyer
The Nell Hirschberg Chair

Marc Moskowitz*
*The William Charles Rankin
Chair*

Lisa Howard Shaughnessy
The Sara Wilson Hodgkins Chair

Nathaniel Yaffe
*The Secretary of Cultural
Resources Betty Ray McCain
Chair*

Double Bass

Leonid Finkelshteyn, Principal
*The Martha and Peyton
Woodson Chair*

Bruce Ridge*,
Associate Principal
*The John C. and Margaret P.
Parker Chair*

Craig Brown
*The Mark W. McClure Foundation
Chair*

Erik Dyke
*The Harlee H. and Pauline G.
Jobe Chair*

John Spuller*
*The Dr. and Mrs. Preston H. Gada
Chair*

Flute

Anne Whaley Laney, Principal
*The Mr. and Mrs. George M.
Stephens Chair*

Mary E. Boone,
Assistant Principal
*The Dr. and Mrs. Shaler Stidham,
Jr. Chair*

Vaynu Kadiyali*
The Jack and Sing Boddie Chair

Piccolo

Vaynu Kadiyali*
The Jean Dunn Williams Chair

Oboe

Melanie Wilsden, Principal
The Hardison and Stoltze Chair

Joseph Peters,
Associate Principal,
The Lizette T. Dunham Chair

Rachel Ahn*
*The Clarence and Alice Aycock
Poe Chair*

English Horn

Joseph Peters
The Bruce and Margaret King Chair

Clarinet

Samuel Almaguer, Principal
The Mr. and Mrs. J. Christopher Walker, II Chair

Sammy Lesnick,
Assistant Principal
The Kathryn Powell and Green Flavie Cooper Chair

Bassoon

Aaron Apaza, Principal
The Mr. and Mrs. Fitzgerald S. Hudson Chair

Wenmin Zhang,
Assistant Principal,
The Beethoven Chair

French Horn

Rebekah Daley, Principal
The Mary T. McCurdy Chair

Kimberly Van Pelt,
Associate Principal
The Paul R. Villard and Gabriel Wolf Chair

Corbin Castro*
The Roger Colson and Bobbi Lyon Hackett Chair

Gabriel Mairson*
The James Marion Poyner Chair

To Be Filled
The Mary Susan Kirk Fulghum Chair

Trumpet

Paul Randall, Principal
The George Smedes Poyner Chair

David Dash*,
Associate Principal
The Henry and Martha Zaytoun and Family Chair

Trombone

John Ilika, Principal
The Thomas Warwick Steed, Jr. Family Chair

Steven Osborne*, Assistant Principal

Jonathan Randazzo**,
Assistant Principal
The Frances Armour Bryant Chair

Bass Trombone

Matthew Neff
Anonymously Endowed

Tuba

Seth Horner, Principal
The Governor and Mrs. James G. Martin, Jr. Chair

Harp

Anita Burroughs-Price
Vonda Darr

Timpani

Colin Hartnett, Principal
The Patricia R., Steven T. and George F. Hackney III Chair

Percussion

Richard Motylinski, Principal
The Margery and Earl Johnson, Jr. Chair

Rajesh Prasad,
Assistant Principal
The Abram and Frances Pascher Kanof Chair

Organ

To Be Filled
The Albert and Susan Jenkins and Family Organ Chair

Library

Stephanie Wilson, Principal
Orchestra Librarian
The Mary Colvert and Banks C. Talley Chair

Taylor Troyer,
Assistant Orchestra Librarian

*Acting position

**Leave of absence

Named musician chairs are made possible through very meaningful gifts to the Symphony's endowment. As such, these donor families are also members of the Lamar Stringfield Society.

All string players rotate stands on a periodic basis in each section with the exception of titled players: Principals, Associate Principals, and Assistant Principals.

The North Carolina Symphony is a member of the League of American Orchestras and the International Conference of Symphony and Opera Musicians.

The North Carolina Master Chorale is the Resident Chorus of the North Carolina Symphony.

*The North Carolina Symphony Foundation gratefully acknowledges the generous gift of the Lupot violin from Arnold and Zenat Lerman.
†deceased*