

NORTH CAROLINA  
**SYMPHONY**

**2023/24 SEASON**

**A New Era**

**CARLOS MIGUEL PRIETO**  
MUSIC DIRECTOR



**FAMILY CONCERT**

# Mozart's Magnificent Voyage

**SAT, JAN 6, 2024 | 1PM & 4PM**

MEYMANDI CONCERT HALL, WOOLNER STAGE, RALEIGH  
Michelle Di Russo, *conductor*



SERIES SPONSOR

**WakeMed**  
Children's

**Martin Marietta**  
Center for the Performing Arts

# NORTH CAROLINA **SYMPHONY**

YOUNG PEOPLE'S CONCERT

## Mozart's Magnificent Voyage

**SAT, JAN 6, 2024 | 1PM & 4PM**

MEYMANDI CONCERT HALL, WOOLNER STAGE  
MARTIN MARIETTA CENTER FOR THE PERFORMING ARTS, RALEIGH

North Carolina Symphony

Michelle Di Russo, *conductor*

Classical Kids Live!

The North Carolina Symphony presents  
Mozart's Magnificent Voyage  
by Classical Kids LIVE!

Featuring

Elic Bramlett as Wolfgang Amadeus Mozart  
&  
Sarah Cartwright as Karl Thomas Mozart

Director and Producer  
Paul Pement

Series Creator  
Susan Hammond

Playwright & Music Editor  
Douglas Cowling

Dramaturgy & Music Timing by  
Paul Pement

The theatrical concert version of *Mozart's Magnificent Voyage* is an adaptation of the best-selling and award-winning Classical Kids recordings, *Mozart's Magnificent Voyage* and *Mozart's Magic Fantasy*, produced by Susan Hammond.

Classical Kids® is a trademark of Classical Productions for Children Ltd. internationally licensed exclusively to and produced by Classical Kids Music Education, NFP.

The North Carolina Symphony gratefully acknowledges the support of Young Peoples Concert Series Sponsor WakeMed Children's.

*This concert is made possible in part by  
The Drs. James and Mary Susan Fulghum Fund.*



NAME \_\_\_\_\_

AGE \_\_\_\_\_



Join us April 6 for our next  
Young People's Concert,  
**Peter and the Wolf**

Save with a Family 4-Pack  
with **promo code FAM4**  
for just \$60

*Price does not include sales tax. Offer not  
retroactive or available at the door.*

NORTH CAROLINA **SYMPHONY**  
**Mozart's Magnificent Voyage**

SAT, JAN 6, 2024 | 1PM & 4PM

YOUNG PEOPLE'S  
SERIES SPONSOR

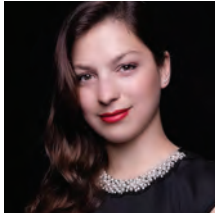
WakeMed   
Children's

*This concert is made possible in part by  
The Drs. James and Mary Susan Fulghum Fund.*



## About the Artists

---



**Michelle Di Russo, conductor**  
*The Lucy Moore Ruffin Chair*

*Michelle Di Russo is Associate Conductor of the North Carolina Symphony where she is responsible for conducting the Symphony's extensive statewide music education concerts. She has conducted UNC Health Summerfest performances, Young People's Concerts, and Statewide Holiday Pops concerts with the Symphony, as well as classical subscription performances in Chapel Hill and Wilmington.*

A graceful and powerful force on the podium, Michelle Di Russo is known for her compelling interpretations, passionate musicality, and championing of contemporary music. She has recently been appointed a 2023/24 Dudamel Fellow with the Los Angeles Philharmonic and participated at the Lucerne Festival Academy. An advocate for underrepresented artists, she co-founded the organization Girls Who Conduct to support younger generations of women and non-binary conductors.

Di Russo's artistic journey began in her native country, Argentina, at the age of three with ballet lessons, followed by studies in voice and piano. She has acted on television and onstage. Di Russo holds multiple degrees in Orchestral Conducting from Pontifical Catholic University of Argentina, University of Kentucky (M.M.), and Arizona State University (D.M.A.). She is a former Freeman Conducting Fellow in Chicago Sinfonietta's prestigious Project Inclusion program and a recipient of the Concert Artists Guild's Richard S. Weinert Award.

Previously, Di Russo served as Interim Director of Orchestras at Cornell University, Assistant Conductor for the Phoenix Youth Symphony Orchestra, cover conductor and assistant for The Phoenix Symphony and Arizona Musicfest, and as a conducting fellow at the Cortona Sessions for New Music in Italy. She has also acted as cover conductor for the Minnesota Orchestra, St. Louis Symphony Orchestra, San Diego Symphony, and the National Symphony Orchestra. In the summer of 2022, she served as the Joel Revzen Conducting Fellow at Festival Napa Valley.



**Elic Bramlett,**  
*Wolfgang Amadeus Mozart*

Elic joined Classical Kids during the 2005-06 season and has toured the US, Canada, and Malaysia playing Mozart and Gershwin. A native of Phoenix, Arizona, he now makes his home in Chicago. Stage credits include: *South Pacific* at the Drury Lane Theatre, *Stage Kiss* and *The Boys are Coming Home* at the Goodman Theatre; *Western Civilization* at Noble Fool Theatre; *Teapot Scandals*, *Elegies*, *Sweeney Todd*, *Macabaret*, *Hereafter*, and *Three Sisters* at Porchlight Music Theatre; *The Bomb-itty of Errors* at The Royal George; and *Saturday Night* at Pegasus Players. In *Forever Plaid*, Elic has played the roles of Jinx, Frankie, and Sparky at several regional theaters. Elic also makes his living as a TV/Film actor, voice-over talent, and as a director, producer, and teacher in the Chicago area.



**Sarah Cartwright,**  
*Karl Thomas Mozart*

Sarah has been performing with Classical Kids as Christoph in *Beethoven Lives Upstairs* and Karl Mozart in *Mozart's Magnificent Voyage* since 2018. She grew up in Minnesota and always had a soft spot for classical music thanks to her music-therapist parents. Growing up, she even listened to the Classical Kids recordings!

Sarah moved to Chicago to attend Northwestern University and has worked there as an actor and educator ever since. Favorite past productions include: *Pinocchio* at Neverbird Project/Chicago Children's Theatre, *Grey House* and *The Haven Place* at A Red Orchid Theatre, *A Comedical Tragedy for Mister Punch* at the House Theatre of Chicago, and *James and the Giant Peach* at Northwestern University.

# The Musicians of the North Carolina Symphony

---

Carlos Miguel Prieto,  
Music Director  
*The Maxine and  
Benjamin Swalin  
Chair*

Grant Llewellyn,  
Music Director Laureate

Michelle Di Russo,  
Associate Conductor  
*The Lucy Moore Ruffin Chair*

## Violin I

Brian Reagin, Concertmaster  
*The Annabelle Lundy Fetterman  
Chair*

Jessica Hung,  
Associate Concertmaster  
*The Assad Meymandi and Family  
Chair*

Anna Black,  
Assistant Concertmaster  
*The Anne Heartt Gregory Chair*

Karen Strittmatter Galvin,  
Assistant Concertmaster

Carol Chung\*

Emily Rist Glover  
*The Jessie Wyatt Ethridge Chair*

Paul Goldsberry  
*The Richard and Joy Cook Chair*

So Yun Kim\*\*  
*The Governor James B. Hunt, Jr.  
Chair*

Maria Meyer  
*The Tom and Mary Mac  
Bradshaw Chair*

Pablo Sánchez Pazos  
*The Phyllis ("Pat") Conrad Wells  
Chair*

Jessica Ryou  
*The James C. Byrd and Family  
Chair*

Lin-Ti Wang\*

Eileen Wynne  
*The Harvey At-Large Chair*

Erin Zehngut  
*The J. Felix Arnold Chair*

## Violin II

Jacqueline Saed Wolborsky,  
Principal  
*The Nancy Finch Wallace Chair*

Tiffany Kang,  
Associate Principal  
*The Blanche Martin Shaw Chair*

David Kilbride, Assistant  
Principal

Qi Cao  
Janet Gayer Hall

Chris Jusell\*  
Leah Latorraca\*  
Oskar Ozolinch  
Jeanine Wynton

## Viola

Samuel Gold, Principal  
*The Florence Spinks and Charles  
Jacob Cate and Alma Yondorf  
and Sylvan Hirschberg Chair*

Kurt Tseng,  
Associate Principal  
*The Betty Ellen Madry Chair*

Brian Sherwood,  
Assistant Principal

Petra Berényi

Paul Malcolm

Amy Mason  
*The J. Sidney Kirk Chair*

Daniel Moore

Sandra Schwarcz  
*The Samuel H. and Anne Latham  
Johnson Chair*

## Cello

Bonnie Thron, Principal  
*The June and Tom Roberg Chair*

Elizabeth Beilman,  
Associate Principal  
*The Sarah Carlyle Herbert Dorroh  
Chair*

Peng Li, Assistant Principal,  
*Anonymously Endowed*

Yewon Ahn  
*Anonymously Endowed*

David Meyer  
*The Nell Hirschberg Chair*

Marc Moskowitz\*  
*The William Charles Rankin  
Chair*

Lisa Howard Shaughnessy  
*The Sara Wilson Hodgkins Chair*

Nathaniel Yaffe  
*The Secretary of Cultural  
Resources Betty Ray McCain  
Chair*

## Double Bass

Leonid Finkelshteyn, Principal  
*The Martha and Peyton  
Woodson Chair*

Bruce Ridge\*,  
Associate Principal  
*The John C. and Margaret P.  
Parker Chair*

Craig Brown  
*The Mark W. McClure Foundation  
Chair*

Erik Dyke  
*The Harlee H. and Pauline G.  
Jobe Chair*

John Spuller\*  
*The Dr. and Mrs. Preston H. Gada  
Chair*

## Flute

Anne Whaley Laney, Principal  
*The Mr. and Mrs. George M.  
Stephens Chair*

Mary E. Boone,  
Assistant Principal  
*The Dr. and Mrs. Shaler Stidham,  
Jr. Chair*

Vaynu Kadiyali\*  
*The Jack and Sing Boddie Chair*

## Piccolo

Vaynu Kadiyali\*  
*The Jean Dunn Williams Chair*

## Oboe

Melanie Wilsden, Principal  
*The Hardison and Stoltze Chair*

Joseph Peters,  
Associate Principal,  
*The Lizette T. Dunham Chair*

Rachel Ahn\*  
*The Clarence and Alice Aycock  
Poe Chair*

## English Horn

Joseph Peters  
*The Bruce and Margaret King Chair*

## Clarinet

Samuel Almaguer, Principal  
*The Mr. and Mrs. J. Christopher Walker, II Chair*

Sammy Lesnick,  
Assistant Principal  
*The Kathryn Powell and Green Flavia Cooper Chair*

## Bassoon

Aaron Apaza, Principal  
*The Mr. and Mrs. Fitzgerald S. Hudson Chair*

Wenmin Zhang,  
Assistant Principal,  
*The Beethoven Chair*

## French Horn

Rebekah Daley, Principal  
*The Mary T. McCurdy Chair*

Kimberly Van Pelt,  
Associate Principal  
*The Paul R. Villard and Gabriel Wolf Chair*

Corbin Castro\*  
*The Roger Colson and Bobbi Lyon Hackett Chair*

Gabriel Mairson\*  
*The James Marion Poyner Chair*

To Be Filled  
*The Mary Susan Kirk Fulghum Chair*

## Trumpet

Paul Randall, Principal  
*The George Smedes Poyner Chair*

Clinton McLendon,  
Associate Principal  
*The Henry and Martha Zaytoun and Family Chair*

## Trombone

John Ilika, Principal  
*The Thomas Warwick Steed, Jr. Family Chair*

Steven Osborne\*, Assistant  
Principal

Jonathan Randazzo\*\*,  
Assistant Principal  
*The Frances Armour Bryant Chair*

## Bass Trombone

Matthew Neff  
*Anonymously Endowed*

## Tuba

Seth Horner, Principal  
*The Governor and Mrs. James G. Martin, Jr. Chair*

## Harp

Anita Burroughs-Price  
Vonda Darr

## Timpani

Colin Hartnett, Principal  
*The Patricia R., Steven T. and George F. Hackney III Chair*

## Percussion

Richard Motylinski, Principal  
*The Margery and Earl Johnson, Jr. Chair*

Rajesh Prasad,  
Assistant Principal  
*The Abram and Frances Pascher Kanof Chair*

## Organ

To Be Filled  
*The Albert and Susan Jenkins and Family Organ Chair*

## Library

Stephanie Wilson, Principal  
Orchestra Librarian  
*The Mary Colvert and Banks C. Talley Chair*

Taylor Troyer,  
Assistant Orchestra Librarian

\*Acting position

\*\*Leave of absence

**Named musician chairs are made possible through very meaningful gifts to the Symphony's endowment. As such, these donor families are also members of the Lamar Stringfield Society.**

*All string players rotate stands on a periodic basis in each section with the exception of titled players: Principals, Associate Principals, and Assistant Principals.*

*The North Carolina Symphony is a member of the League of American Orchestras and the International Conference of Symphony and Opera Musicians.*

*The North Carolina Master Chorale is the Resident Chorus of the North Carolina Symphony.*

*The North Carolina Symphony Foundation gratefully acknowledges the generous gift of the Lupot violin from Arnold and Zena† Lerman.*

*†deceased*