

NORTH CAROLINA
SYMPHONY

2023/24 SEASON

A New Era

CARLOS MIGUEL PRIETO
MUSIC DIRECTOR



FAMILY CONCERT

Mozart's Magnificent Voyage

SUN, JAN 7, 2024 | 3PM

RIVERFRONT CONVENTION CENTER, NEW BERN
Michelle Di Russo, conductor



SERIES SPONSOR



CAROLINA EAST
HEALTH SYSTEM

NORTH CAROLINA **SYMPHONY**

YOUNG PEOPLE'S CONCERT

Mozart's Magnificent Voyage

SUN, JAN 7, 2024 | 3PM

RIVERFRONT CONVENTION CENTER, NEW BERN

North Carolina Symphony

Michelle Di Russo, *conductor*

Classical Kids Live!

The North Carolina Symphony presents
Mozart's Magnificent Voyage
by Classical Kids LIVE!

Featuring

Elic Bramlett as Wolfgang Amadeus Mozart
&
Sarah Cartwright as Karl Thomas Mozart

Director and Producer
Paul Pement

Series Creator
Susan Hammond

Playwright & Music Editor
Douglas Cowling

Dramaturgy & Music Timing by
Paul Pement

The theatrical concert version of *Mozart's Magnificent Voyage* is an adaptation of the best-selling and award-winning Classical Kids recordings, *Mozart's Magnificent Voyage* and *Mozart's Magic Fantasy*, produced by Susan Hammond.

Classical Kids® is a trademark of Classical Productions for Children Ltd. internationally licensed exclusively to and produced by Classical Kids Music Education, NFP.

The North Carolina Symphony gratefully acknowledges the support of New Bern Series Sponsor CarolinaEast Health System.



This concert is made possible in part by The Drs. James and Mary Susan Fulghum Fund.

MEDIA PARTNER

Sun Journal

NAME _____

AGE _____



NORTH CAROLINA **SYMPHONY**
Mozart's Magnificent Voyage

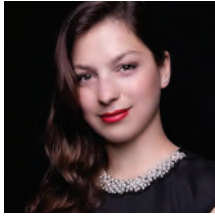
SUN, JAN 7, 2024 | 3PM

SERIES SPONSOR



*This concert is made possible in part by
The Drs. James and Mary Susan Fulghum Fund.*

About the Artists



Michelle Di Russo, conductor
The Lucy Moore Ruffin Chair

Michelle Di Russo is Associate Conductor of the North Carolina Symphony where she is responsible for conducting the Symphony's extensive statewide music education concerts. She has conducted UNC Health Summerfest performances, Young People's Concerts, and Statewide Holiday Pops concerts with the Symphony, as well as classical subscription performances in Chapel Hill and Wilmington.

A graceful and powerful force on the podium, Michelle Di Russo is known for her compelling interpretations, passionate musicality, and championing of contemporary music. She has recently been appointed a 2023/24 Dudamel Fellow with the Los Angeles Philharmonic and participated at the Lucerne Festival Academy. An advocate for underrepresented artists, she co-founded the organization Girls Who Conduct to support younger generations of women and non-binary conductors.

Di Russo's artistic journey began in her native country, Argentina, at the age of three with ballet lessons, followed by studies in voice and piano. She has acted on television and onstage. Di Russo holds multiple degrees in Orchestral Conducting from Pontifical Catholic University of Argentina, University of Kentucky (M.M.), and Arizona State University (D.M.A.). She is a former Freeman Conducting Fellow in Chicago Sinfonietta's prestigious Project Inclusion program and a recipient of the Concert Artists Guild's Richard S. Weinert Award.

Previously, Di Russo served as Interim Director of Orchestras at Cornell University, Assistant Conductor for the Phoenix Youth Symphony Orchestra, cover conductor and assistant for The Phoenix Symphony and Arizona Musicfest, and as a conducting fellow at the Cortona Sessions for New Music in Italy. She has also acted as cover conductor for the Minnesota Orchestra, St. Louis Symphony Orchestra, San Diego Symphony, and the National Symphony Orchestra. In the summer of 2022, she served as the Joel Revzen Conducting Fellow at Festival Napa Valley.



Elic Bramlett,
Wolfgang Amadeus Mozart

Elic joined Classical Kids during the 2005-06 season and has toured the US, Canada, and Malaysia playing Mozart and Gershwin. A native of Phoenix, Arizona, he now makes his home in Chicago. Stage credits include: *South Pacific* at the Drury Lane Theatre, *Stage Kiss* and *The Boys are Coming Home* at the Goodman Theatre; *Western Civilization* at Noble Fool Theatre; *Teapot Scandals*, *Elegies*, *Sweeney Todd*, *Macabaret*, *Hereafter*, and *Three Sisters* at Porchlight Music Theatre; *The Bomb-itty of Errors* at The Royal George; and *Saturday Night* at Pegasus Players. In *Forever Plaid*, Elic has played the roles of Jinx, Frankie, and Sparky at several regional theaters. Elic also makes his living as a TV/Film actor, voice-over talent, and as a director, producer, and teacher in the Chicago area.



Sarah Cartwright,
Karl Thomas Mozart

Sarah has been performing with Classical Kids as Christoph in *Beethoven Lives Upstairs* and Karl Mozart in *Mozart's Magnificent Voyage* since 2018. She grew up in Minnesota and always had a soft spot for classical music thanks to her music-therapist parents. Growing up, she even listened to the Classical Kids recordings!

Sarah moved to Chicago to attend Northwestern University and has worked there as an actor and educator ever since. Favorite past productions include: *Pinocchio* at Neverbird Project/Chicago Children's Theatre, *Grey House* and *The Haven Place* at A Red Orchid Theatre, *A Comedical Tragedy for Mister Punch* at the House Theatre of Chicago, and *James and the Giant Peach* at Northwestern University.

The Musicians of the North Carolina Symphony

Carlos Miguel Prieto,
Music Director
*The Maxine and
Benjamin Swalin
Chair*

Grant Llewellyn,
Music Director Laureate

Michelle Di Russo,
Associate Conductor
The Lucy Moore Ruffin Chair

Violin I

Brian Reagin, Concertmaster
*The Annabelle Lundy Fetterman
Chair*

Jessica Hung,
Associate Concertmaster
*The Assad Meymandi and Family
Chair*

Anna Black,
Assistant Concertmaster
The Anne Heartt Gregory Chair

Karen Strittmatter Galvin,
Assistant Concertmaster

Carol Chung*

Emily Rist Glover
The Jessie Wyatt Ethridge Chair

Paul Goldsberry
The Richard and Joy Cook Chair

So Yun Kim**
*The Governor James B. Hunt, Jr.
Chair*

Maria Meyer
*The Tom and Mary Mac
Bradshaw Chair*

Pablo Sánchez Pazos
*The Phyllis ("Pat") Conrad Wells
Chair*

Jessica Ryou
*The James C. Byrd and Family
Chair*

Lin-Ti Wang*

Eileen Wynne
The Harvey At-Large Chair

Erin Zehngut
The J. Felix Arnold Chair

Violin II

Jacqueline Saed Wolborsky,
Principal
The Nancy Finch Wallace Chair

Tiffany Kang,
Associate Principal
The Blanche Martin Shaw Chair

David Kilbride, Assistant
Principal

Qi Cao
Janet Gayer Hall

Chris Jusell*
Leah Latorraca*
Oskar Ozolinch
Jeanine Wynton

Viola

Samuel Gold, Principal
*The Florence Spinks and Charles
Jacob Cate and Alma Yondorf
and Sylvan Hirschberg Chair*

Kurt Tseng,
Associate Principal
The Betty Ellen Madry Chair

Brian Sherwood,
Assistant Principal

Petra Berényi

Paul Malcolm

Amy Mason
The J. Sidney Kirk Chair

Daniel Moore

Sandra Schwarcz
*The Samuel H. and Anne Latham
Johnson Chair*

Cello

Bonnie Thron, Principal
The June and Tom Roberg Chair

Elizabeth Beilman,
Associate Principal
*The Sarah Carlyle Herbert Dorroh
Chair*

Peng Li, Assistant Principal,
Anonymously Endowed

Yewon Ahn
Anonymously Endowed

David Meyer
The Nell Hirschberg Chair

Marc Moskovitz*
*The William Charles Rankin
Chair*

Lisa Howard Shaughnessy
The Sara Wilson Hodgkins Chair

Nathaniel Yaffe
*The Secretary of Cultural
Resources Betty Ray McCain
Chair*

Double Bass

Leonid Finkelshteyn, Principal
*The Martha and Peyton
Woodson Chair*

Bruce Ridge*,
Associate Principal
*The John C. and Margaret P.
Parker Chair*

Craig Brown
*The Mark W. McClure Foundation
Chair*

Erik Dyke
*The Harlee H. and Pauline G.
Jobe Chair*

John Spuller*
*The Dr. and Mrs. Preston H. Gada
Chair*

Flute

Anne Whaley Laney, Principal
*The Mr. and Mrs. George M.
Stephens Chair*

Mary E. Boone,
Assistant Principal
*The Dr. and Mrs. Shaler Stidham,
Jr. Chair*

Vaynu Kadiyali*
The Jack and Sing Boddie Chair

Piccolo

Vaynu Kadiyali*
The Jean Dunn Williams Chair

Oboe

Melanie Wilsden, Principal
The Hardison and Stoltze Chair

Joseph Peters,
Associate Principal,
The Lizette T. Dunham Chair

Rachel Ahn*
*The Clarence and Alice Aycock
Poe Chair*

English Horn

Joseph Peters
The Bruce and Margaret King Chair

Clarinet

Samuel Almaguer, Principal
The Mr. and Mrs. J. Christopher Walker, II Chair

Sammy Lesnick,
Assistant Principal
The Kathryn Powell and Green Flavia Cooper Chair

Bassoon

Aaron Apaza, Principal
The Mr. and Mrs. Fitzgerald S. Hudson Chair

Wenmin Zhang,
Assistant Principal,
The Beethoven Chair

French Horn

Rebekah Daley, Principal
The Mary T. McCurdy Chair

Kimberly Van Pelt,
Associate Principal
The Paul R. Villard and Gabriel Wolf Chair

Corbin Castro*
The Roger Colson and Bobbi Lyon Hackett Chair

Gabriel Mairson*
The James Marion Poyner Chair

To Be Filled
The Mary Susan Kirk Fulghum Chair

Trumpet

Paul Randall, Principal
The George Smedes Poyner Chair

Clinton McLendon,
Associate Principal
The Henry and Martha Zaytoun and Family Chair

Trombone

John Ilika, Principal
The Thomas Warwick Steed, Jr. Family Chair

Steven Osborne*, Assistant
Principal

Jonathan Randazzo**,
Assistant Principal
The Frances Armour Bryant Chair

Bass Trombone

Matthew Neff
Anonymously Endowed

Tuba

Seth Horner, Principal
The Governor and Mrs. James G. Martin, Jr. Chair

Harp

Anita Burroughs-Price
Vonda Darr

Timpani

Colin Hartnett, Principal
The Patricia R., Steven T. and George F. Hackney III Chair

Percussion

Richard Motylinski, Principal
The Margery and Earl Johnson, Jr. Chair

Rajesh Prasad,
Assistant Principal
The Abram and Frances Pascher Kanof Chair

Organ

To Be Filled
The Albert and Susan Jenkins and Family Organ Chair

Library

Stephanie Wilson, Principal
Orchestra Librarian
The Mary Colvert and Banks C. Talley Chair

Taylor Troyer,
Assistant Orchestra Librarian

*Acting position

**Leave of absence

Named musician chairs are made possible through very meaningful gifts to the Symphony's endowment. As such, these donor families are also members of the Lamar Stringfield Society.

All string players rotate stands on a periodic basis in each section with the exception of titled players: Principals, Associate Principals, and Assistant Principals.

The North Carolina Symphony is a member of the League of American Orchestras and the International Conference of Symphony and Opera Musicians.

The North Carolina Master Chorale is the Resident Chorus of the North Carolina Symphony.

The North Carolina Symphony Foundation gratefully acknowledges the generous gift of the Lupot violin from Arnold and Zena† Lerman.

†deceased