

NORTH CAROLINA **SYMPHONY**

The Magic of Rodgers and Hammerstein

FRI-SAT, JAN 19-20, 2024 | 8PM

MEYMANDI CONCERT HALL, WOOLNER STAGE
MARTIN MARIETTA CENTER FOR THE PERFORMING ARTS, RALEIGH

North Carolina Symphony
Michelle Di Russo, *conductor*
Sarah Uriarte Berry, *vocalist*
Josh Young, *vocalist*
Emily Padgett-Young, *vocalist*

PROGRAM

Richard Rodgers / Orch. Edward B. Powell/Gus Levene
The Carousel Waltz from *Carousel*

Richard Rodgers/Oscar Hammerstein II / Orch. Robert Russell Bennett
"It's a Grand Night for Singing" from *State Fair*

Richard Rodgers/Lorenz Hart / Orch. Hans Spialek
"Falling in Love with Love" from *The Boys from Syracuse*

Richard Rodgers/Lorenz Hart / Orch. Hans Spialek
"Johnny One Note" from *Babes in Arms*

Jerome Kern/Oscar Hammerstein II / Orch. Robert Russell Bennett
"All the Things You Are" from *Very Warm for May*

Jerome Kern/Oscar Hammerstein II / Orch. Robert Russell Bennett
"Make Believe" from *Show Boat*

The North Carolina Symphony gratefully
acknowledges the support of Concert
Sponsor The Forest at Duke



Richard Rodgers/Oscar Hammerstein II / Orch. Robert Russell Bennett
"Shall We Dance?" from *The King and I*

Richard Rodgers/Oscar Hammerstein II / Orch. Robert Russell Bennett
"Lonely Goatherd" from *The Sound of Music*

Richard Rodgers/Oscar Hammerstein II / Orch. Robert Russell Bennett
"Climb Ev'ry Mountain" from *The Sound of Music*

INTERMISSION

Richard Rodgers / Orch. Robert Russell Bennett
Overture from *South Pacific*

Richard Rodgers/Oscar Hammerstein II / Orch. Robert Russell Bennett
"This Nearly Was Mine" from *South Pacific*

Richard Rodgers/Lorenz Hart / Orch. Don Walker
"My Funny Valentine" from *Babes in Arms*

Richard Rodgers/Oscar Hammerstein II / Orch. Don Walker
"(When I Marry) Mister Snow" from *Carousel*

Richard Rodgers/Oscar Hammerstein II / Orch. Don Walker
"Soliloquy" from *Carousel*

Richard Rodgers/Oscar Hammerstein II / Orch. Robert Russell Bennett
"I Cain't Say No" from *Oklahoma!*

Richard Rodgers/Oscar Hammerstein II / Orch. Robert Russell Bennett
"People Will Say We're in Love" from *Oklahoma!*

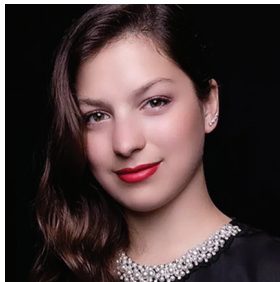
Richard Rodgers/Oscar Hammerstein II / Orch. Robert Russell Bennett
"Oklahoma" from *Oklahoma!*

Doug LaBrecque, director
Jami Greenberg, co-producer

The North Carolina Symphony gratefully acknowledges financial support from Wake County, the City of Raleigh, and the State of North Carolina.



About the Artists



Michelle Di Russo, conductor

The Lucy Moore Ruffin Chair

Michelle Di Russo is Associate Conductor of the North Carolina Symphony where she is responsible for conducting the Symphony's extensive statewide music education concerts. She has conducted UNC Health Summerfest performances, Young People's Concerts, and Statewide Holiday Pops concerts with the Symphony, as well as classical subscription performances in Chapel Hill and Wilmington.

A graceful and powerful force on the podium, Michelle Di Russo is known for her compelling interpretations, passionate musicality, and championing of contemporary music. She has recently been appointed a 2023/24 Dudamel Fellow with the Los Angeles Philharmonic and participated at the Lucerne Festival Academy. An advocate for underrepresented artists, she co-founded the organization Girls Who Conduct to support younger generations of women and non-binary conductors.

Di Russo's artistic journey began in her native country, Argentina, at the age of three with ballet lessons, followed by studies in voice and piano. She has acted on television and onstage. Di Russo holds multiple degrees in Orchestral Conducting from Pontifical Catholic University of Argentina, University of Kentucky (M.M.), and Arizona State University (D.M.A.). She is a former Freeman Conducting Fellow in Chicago Sinfonietta's prestigious Project Inclusion program and a recipient of the Concert Artists Guild's Richard S. Weinert Award.

Previously, Di Russo served as Interim Director of Orchestras at Cornell University, Assistant Conductor for the Phoenix Youth Symphony Orchestra, cover conductor and assistant for The Phoenix Symphony and Arizona Musicfest, and as a conducting fellow at the Cortona Sessions for New Music in Italy. She has also acted as cover conductor for the Minnesota Orchestra, St. Louis Symphony Orchestra, San Diego Symphony, and the National Symphony Orchestra. In the summer of 2022, she served as the Joel Revzen Conducting Fellow at Festival Napa Valley.



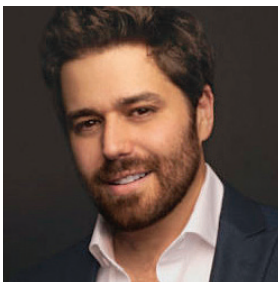
Sarah Uriarte Berry, *vocalist*

These concerts are the North Carolina Symphony debut for Sarah Uriarte Berry.

Sarah Uriarte Berry has starred in five Broadway shows and three Broadway national tours and was a soloist in Bernstein's *Mass* at Carnegie Hall with the Baltimore Symphony Orchestra. On Broadway, she created the role of Franca in *The Light in the Piazza*, for which she received Drama Desk and Outer Critics Circle nominations. Prior to that, she appeared as Belle in Disney's *Beauty & The Beast*, Éponine in *Les Misérables*, Nicola in *Taboo*, and Diana in the Tony Award and Pulitzer Prize winning *Next to Normal*.

Berry appeared in the title role for New York City Opera's production of Rodgers & Hammerstein's *Cinderella*. National tours have included *Carousel*, *Sunset Boulevard*, and *Les Misérables*. Regionally, she appeared in *A Little Night Music* at The Kennedy Center, *Guys and Dolls*, and *The Sound of Music*, among others. As a concert artist, she has sung with The Philadelphia Orchestra, Utah Symphony, Colorado Symphony, Oregon Symphony, and The Florida Orchestra, among others.

Berry debuted her one-woman show celebrating Judy Garland, *For the Love of Judy*, with the Cape Symphony. Broadway Cast recordings include *The Light in the Piazza*, *Taboo*, *The Boys from Syracuse*, and *Tenderloin*. Her television and film appearances include *Law and Order CSI* and the PBS presentation of *The Light in the Piazza*. She is a graduate of the UCLA School of Theater, Film and Television.



Josh Young, *vocalist*

These concerts are the North Carolina Symphony debut for Josh Young.

Prior to his Tony-nominated Broadway debut as Judas Iscariot in *Jesus Christ Superstar*, Josh Young had the distinction of playing the role of Marius in *Les Misérables* in more productions than any other actor. He originated the role of John Newton on Broadway in the world premiere of *Amazing Grace*.

Young was awarded the Broadway World Award for Best Actor in a Musical for his turn as Che in the North American Tour of the Olivier Award-winning revival of Andrew Lloyd Webber's *Evita*—a role he had previously played at the Stratford Festival, where he was a company member for two seasons. He toured Europe and Asia as Tony for the 50th Anniversary of Leonard Bernstein's *West Side Story*. Regionally, he has performed in theaters including La Jolla

Playhouse, Baltimore Center Stage, San Diego Repertory Theatre, and North Carolina Theatre.

As a concert artist, Young has performed as a guest soloist for symphonies across the globe. Most recently, he headlined for the Toronto Symphony Orchestra and the Detroit Symphony Orchestra. He has written five one-man cabarets, which have sold out venues from New York City to Ho Chi Minh City.

Young can be heard on albums including the original cast recording of *Amazing Grace* and two solo albums: *Still Dreaming of Paradise* and his self-titled debut album *Josh Young*. He is the Coordinator of Musical Theatre at Oakland University.



Emily Padgett-Young, *vocalist*

These concerts are the North Carolina Symphony debut for Emily Padgett-Young.

Emily Padgett-Young has originated roles on Broadway in *Bright Star* and *Charlie and the Chocolate Factory*, as well as performing leading roles in *Rock of Ages* and in the revival of *Side Show*. Other Broadway appearances have included *Legally Blonde* and the revival of *Grease*. She played the role of Sandy for a year in the first national touring company of *Grease*, starred in the national tour of *Flashdance: The Musical*, and appeared in a limited-run, off-Broadway revival of *Sweet Charity*.

On the way to Broadway, the revised version of *Side Show* won a Helen Hayes Award as Outstanding Musical in Washington, D.C. Padgett-Young was nominated for a Hayes Award as Outstanding Lead Actress. She appeared on two recordings with the *Side Show* cast, who reunited to record a live performance featuring additional songs and extended versions. She also appeared in original cast recordings of *Bright Star* and *Charlie and the Chocolate Factory*.

The Musicians of the North Carolina Symphony

Carlos Miguel Prieto,
Music Director
*The Maxine and
Benjamin Swalin
Chair*

Grant Llewellyn,
Music Director Laureate

Michelle Di Russo,
Associate Conductor
The Lucy Moore Ruffin Chair

Violin I

Brian Reagin, Concertmaster
*The Annabelle Lundy Fetterman
Chair*

Jessica Hung,
Associate Concertmaster
*The Assad Meymandi and Family
Chair*

Anna Black,
Assistant Concertmaster
The Anne Heartt Gregory Chair

Karen Strittmatter Galvin,
Assistant Concertmaster

Carol Chung*

Emily Rist Glover
The Jessie Wyatt Ethridge Chair

Paul Goldsberry
The Richard and Joy Cook Chair

So Yun Kim**
*The Governor James B. Hunt, Jr.
Chair*

Maria Meyer
*The Tom and Mary Mac
Bradshaw Chair*

Pablo Sánchez Pazos
*The Phyllis ("Pat") Conrad Wells
Chair*

Jessica Ryou
*The James C. Byrd and Family
Chair*

Lin-Ti Wang*

Eileen Wynne
The Harvey At-Large Chair

Erin Zehngut
The J. Felix Arnold Chair

Violin II

Jacqueline Saed Wolborsky,
Principal
The Nancy Finch Wallace Chair

Tiffany Kang,
Associate Principal
The Blanche Martin Shaw Chair

David Kilbride, Assistant
Principal

Qi Cao
Janet Gayer Hall

Chris Jusell*

Leah Latorraca*

Oskar Ozolinch
Jeanine Wynton

Viola

Samuel Gold, Principal
*The Florence Spinks and Charles
Jacob Cate and Alma Yondorf
and Sylvan Hirschberg Chair*

Kurt Tseng,
Associate Principal
The Betty Ellen Madry Chair

Brian Sherwood,
Assistant Principal

Petra Berényi

Paul Malcolm

Amy Mason
The J. Sidney Kirk Chair

Daniel Moore

Sandra Schwarcz
*The Samuel H. and Anne Latham
Johnson Chair*

Cello

Bonnie Thron, Principal
The June and Tom Roberg Chair

Elizabeth Beilman,
Associate Principal
*The Sarah Carlyle Herbert Dorroh
Chair*

Peng Li, Assistant Principal,
Anonymously Endowed

Yewon Ahn
Anonymously Endowed

David Meyer
The Nell Hirschberg Chair

Marc Moskowitz*
*The William Charles Rankin
Chair*

Lisa Howard Shaughnessy
The Sara Wilson Hodgkins Chair

Nathaniel Yaffe
*The Secretary of Cultural
Resources Betty Ray McCain
Chair*

Double Bass

Leonid Finkelshteyn, Principal
*The Martha and Peyton
Woodson Chair*

Bruce Ridge*,
Associate Principal
*The John C. and Margaret P.
Parker Chair*

Craig Brown
*The Mark W. McClure Foundation
Chair*

Erik Dyke
*The Harlee H. and Pauline G.
Jobe Chair*

John Spuller*
*The Dr. and Mrs. Preston H. Gada
Chair*

Flute

Anne Whaley Laney, Principal
*The Mr. and Mrs. George M.
Stephens Chair*

Mary E. Boone,
Assistant Principal
*The Dr. and Mrs. Shaler Stidham,
Jr. Chair*

Vaynu Kadiyali*
The Jack and Sing Boddie Chair

Piccolo

Vaynu Kadiyali*
The Jean Dunn Williams Chair

Oboe

Melanie Wilsden, Principal
The Hardison and Stoltze Chair

Joseph Peters,
Associate Principal,
The Lizette T. Dunham Chair

Rachel Ahn*
*The Clarence and Alice Aycock
Poe Chair*

English Horn

Joseph Peters
*The Bruce and Margaret King
Chair*

Clarinet

Samuel Almaguer, Principal
*The Mr. and Mrs. J. Christopher
Walker, II Chair*

Sammy Lesnick,
Assistant Principal
*The Kathryn Powell and Green
Flavie Cooper Chair*

Bassoon

Aaron Apaza, Principal
*The Mr. and Mrs. Fitzgerald S.
Hudson Chair*

Wenmin Zhang,
Assistant Principal,
The Beethoven Chair

French Horn

Rebekah Daley, Principal
The Mary T. McCurdy Chair

Kimberly Van Pelt,
Associate Principal
*The Paul R. Villard and Gabriel
Wolf Chair*

Corbin Castro*
*The Roger Colson and Bobbi
Lyon Hackett Chair*

Gabriel Mairson*
The James Marion Poyner Chair

To Be Filled
*The Mary Susan Kirk Fulghum
Chair*

Trumpet

Paul Randall, Principal
The George Smedes Poyner Chair

Clinton McLendon,
Associate Principal
*The Henry and Martha Zaytoun
and Family Chair*

Trombone

John Ilika, Principal
*The Thomas Warwick Steed, Jr.
Family Chair*

Steven Osborne*, Assistant
Principal

Jonathan Randazzo**,
Assistant Principal
The Frances Armour Bryant Chair

Bass Trombone

Matthew Neff
Anonymously Endowed

Tuba

Seth Horner, Principal
*The Governor and Mrs. James G.
Martin, Jr. Chair*

Harp

Anita Burroughs-Price
Vonda Darr

Timpani

Colin Hartnett, Principal
*The Patricia R., Steven T. and
George F. Hackney III Chair*

Percussion

Richard Motylinski, Principal
*The Margery and Earl Johnson,
Jr. Chair*

Rajesh Prasad,
Assistant Principal
*The Abram and Frances Pascher
Kanof Chair*

Organ

To Be Filled
*The Albert and Susan Jenkins
and Family Organ Chair*

Library

Stephanie Wilson, Principal
Orchestra Librarian
*The Mary Colvert and Banks C.
Talley Chair*

Taylor Troyer,
Assistant Orchestra Librarian

*Acting position

**Leave of absence

**Named musician chairs
are made possible through
very meaningful gifts to the
Symphony's endowment. As
such, these donor families are
also members of the Lamar
Stringfield Society.**

*All string players rotate stands on
a periodic basis in each section
with the exception of titled
players: Principals, Associate
Principals, and Assistant
Principals.*

*The North Carolina Symphony
is a member of the League of
American Orchestras and the
International Conference of
Symphony and Opera Musicians.*

*The North Carolina Master
Chorale is the Resident Chorus of
the North Carolina Symphony.*

*The North Carolina Symphony
Foundation gratefully
acknowledges the generous
gift of the Lupot violin from
Arnold and Zena† Lerman.*

†deceased