

NORTH CAROLINA SYMPHONY

Holiday Pops

FRI, DEC 8, 2023 | 8PM

SAT, DEC 9, 2023 | 3PM & 8PM

MEYMANDI CONCERT HALL, WOOLNER STAGE
MARTIN MARIETTA CENTER FOR THE PERFORMING ARTS, RALEIGH

North Carolina Symphony

Michelle Di Russo, *conductor*

Shayna Steele, *vocalist*

North Carolina State University Chorale

Dr. Nathan Leaf, *Artistic Director*

PROGRAM

Various Composers / Arr. Calvin Custer

It's Christmastime, A Medley for Orchestra

Santa Claus Is Coming to Town

Have Yourself a Merry Little Christmas

Silver Bells

I'll Be Home for Christmas

Mykola Dmytrovych Leontovych / Arr. Richard Hayman

Carol of the Bells: Ukrainian Christmas Carol

Traditional / Arr. Jeff Tyzik

"Hark! The Herald Angels Sing"

Shayna Steele, vocalist

Robert Wendel

Little Drummer Boy Bolero from A Classical Christmas Suite

Johnny Marks / Arr. Richard Hayman

Rudolph the Red-Nosed Reindeer

Traditional / Arr. Jeff Tyzik

"O Holy Night"

Shayna Steele, vocalist

North Carolina State University Chorale

Traditional / Arr. Jeff Tyzik

"God Rest Ye Merry, Gentlemen"

Shayna Steele, vocalist

North Carolina State University Chorale

Don Sebesky

A Christmas Scherzo

INTERMISSION

Traditional / Arr. Jeff Tyzik
A Christmas Overture: Variations on Deck the Halls

Leroy Anderson
Bugler's Holiday

Traditional / Arr. Jeff Tyzik
"O Come, All Ye Faithful"
Shayna Steele, *vocalist*
North Carolina State University Chorale

Leroy Anderson
Song of the Bells

John Henry Hopkins Jr. / Arr. Jeff Tyzik
"We Three Kings"
Shayna Steele, *vocalist*

Jerry Herman / Arr. Matt Correia
We Need a Little Christmas from Mame

Eddie Pola and George Wyle / Arr. Bob Cerulli
It's the Most Wonderful Time of the Year

Lowell Mason / Isaac Watts / Arr. Jeff Tyzik
"Joy to the World"
Shayna Steele, *vocalist*
North Carolina State University Chorale

Philip Doddridge / Arr. Jeff Tyzik
"O Happy Day"
Shayna Steele, *vocalist*
North Carolina State University Chorale

The North Carolina Symphony gratefully acknowledges the support of Weekend Sponsor CEI - The Digital Office.



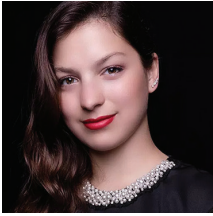
The North Carolina Symphony gratefully acknowledges the support of Concert Sponsor Wells Fargo.



The North Carolina Symphony gratefully acknowledges financial support from Wake County, the City of Raleigh, and the State of North Carolina..



About the Artists



Michelle Di Russo, *conductor*

The Lucy Moore Ruffin Chair

Michelle Di Russo is Associate Conductor of the North Carolina Symphony where she is responsible for conducting the Symphony's extensive statewide music education concerts.

She has conducted UNC Health Summerfest performances, Young People's Concerts, and Statewide Holiday Pops concerts with the Symphony, as well as classical subscription performances in Chapel Hill and Wilmington.

A graceful and powerful force on the podium, Michelle Di Russo is known for her compelling interpretations, passionate musicality, and championing of contemporary music. She has recently been appointed a 2023/24 Dudamel Fellow with the Los Angeles Philharmonic and participated at the Lucerne Festival Academy. An advocate for underrepresented artists, she co-founded the organization Girls Who Conduct to support younger generations of women and non-binary conductors.

Di Russo's artistic journey began in her native country, Argentina, at the age of three with ballet lessons, followed by studies in voice and piano. She has acted on television and onstage. Di Russo holds multiple degrees in Orchestral Conducting from Pontifical Catholic University of Argentina, University of Kentucky (M.M.), and Arizona State University (D.M.A.). She is a former Freeman Conducting Fellow in Chicago Sinfonietta's prestigious Project Inclusion program and a recipient of the Concert Artists Guild's Richard S. Weinert Award.

Previously, Di Russo served as Interim Director of Orchestras at Cornell University, Assistant Conductor for the Phoenix Youth Symphony Orchestra, cover conductor and assistant for The Phoenix Symphony and Arizona Musicfest, and as a conducting fellow at the Cortona Sessions for New Music in Italy. She has also acted as cover conductor for the Minnesota Orchestra, St. Louis Symphony Orchestra, San Diego Symphony, and the National Symphony Orchestra. In the summer of 2022, she served as the Joel Revzen Conducting Fellow at Festival Napa Valley.

NORTH CAROLINA SYMPHONY

*Support artistic excellence,
statewide service, and
music education with a gift to
the Annual Fund. Every gift makes
a difference and counts towards
the 2023/24 State Challenge Grant.*

*Visit ncsymphony.org/donate
or call 919.733.2750.*





Shayna Steele, *vocalist*

Shayna Steele debuted with the North Carolina Symphony in a 2022 Pops concert, called Women Rock!

Shayna Steele was the star soloist this month in *American Diva*, created with her by conductor Jeff Tyzik and the Rochester Philharmonic Orchestra.

Her many orchestra appearances as soloist include the Dallas Symphony Orchestra and the Philly POPS.

Steele's fourth studio album, *Gold Dust* (2023), features original songs and includes covers of songs by Stevie Nicks and Cole Porter. Previous solo albums include *Watch Me Fly* (2019) and *Rise* (2015), which reached #3 on the iTunes jazz charts in the US.

Broadway appearances include *RENT*, *Jesus Christ Superstar*, and an original role in *Hairspray*. She has been featured in multiple recordings and television appearances and has returned after 25 years to finish her degree at the Berklee College of Music.



The North Carolina State University Chorale Dr. Nathan Leaf, *Artistic Director*

These concerts are the North Carolina Symphony debut for the North Carolina State University Chorale.

The North Carolina State University Chorale consists of approximately 50 student singers, all of whom are earning degrees in fields other than music. The Chorale has performed for NC Music Educators Association and American Choral Directors Association conferences. Recent collaborations and commissions have involved the North Carolina Symphony, the American Spiritual Ensemble, the Legend of Zelda: Symphony of the Goddesses tour, and composers Peter Askim, Lisa Bielawa, Christopher Cerrone, Pepper Choplin, and Reena Esmail. Conductor Nathan Leaf has led the choral program at State since 2008 and is also Artistic Director of the Concert Singers of Cary and Voices of a New Renaissance.

The Musicians of the North Carolina Symphony

Carlos Miguel Prieto,
Music Director
*The Maxine and
Benjamin Swalin
Chair*

Grant Llewellyn,
Music Director Laureate

Michelle Di Russo,
Associate Conductor
The Lucy Moore Ruffin Chair

Violin I

Brian Reagin, Concertmaster
*The Annabelle Lundy Fetterman
Chair*

Jessica Hung,
Associate Concertmaster
*The Assad Meymandi and Family
Chair*

Anna Black,
Assistant Concertmaster
The Anne Heartt Gregory Chair

Karen Strittmatter Galvin,
Assistant Concertmaster

Carol Chung*

Emily Rist Glover
The Jessie Wyatt Ethridge Chair

Paul Goldsberry
The Richard and Joy Cook Chair

So Yun Kim**
*The Governor James B. Hunt, Jr.
Chair*

Maria Meyer
*The Tom and Mary Mac
Bradshaw Chair*

Pablo Sánchez Pazos
*The Phyllis ("Pat") Conrad Wells
Chair*

Jessica Ryou
*The James C. Byrd and Family
Chair*

Lin-Ti Wang*

Eileen Wynne
The Harvey At-Large Chair

Erin Zehngut
The J. Felix Arnold Chair

Violin II

Jacqueline Saed Wolborsky,
Principal
The Nancy Finch Wallace Chair

Tiffany Kang,
Associate Principal
The Blanche Martin Shaw Chair

David Kilbride, Assistant
Principal

Qi Cao

Janet Gayer Hall

Chris Jusell*

Leah Latorraca*

Oskar Ozolinch

Jeanine Wynton

Viola

Samuel Gold, Principal
*The Florence Spinks and Charles
Jacob Cate and Alma Yondorf
and Sylvan Hirschberg Chair*

Kurt Tseng,
Associate Principal
The Betty Ellen Madry Chair

Brian Sherwood,
Assistant Principal

Petra Berényi

Paul Malcolm

Amy Mason
The J. Sidney Kirk Chair

Sandra Schwarcz
*The Samuel H. and Anne Latham
Johnson Chair*

Kirsten Swanson*

Cello

Bonnie Thron, Principal
The June and Tom Roberg Chair

Elizabeth Beilman,
Associate Principal
*The Sarah Carlyle Herbert Dorroh
Chair*

Peng Li, Assistant Principal,
Anonymously Endowed

Yewon Ahn
Anonymously Endowed

David Meyer
The Nell Hirschberg Chair

Marc Moskowitz*
*The William Charles Rankin
Chair*

Lisa Howard Shaughnessy
The Sara Wilson Hodgkins Chair

Nathaniel Yaffe
*The Secretary of Cultural
Resources Betty Ray McCain
Chair*

Double Bass

Leonid Finkelshteyn, Principal
*The Martha and Peyton
Woodson Chair*

Bruce Ridge*,
Associate Principal
*The John C. and Margaret P.
Parker Chair*

Craig Brown
*The Mark W. McClure Foundation
Chair*

Erik Dyke
*The Harlee H. and Pauline G.
Jobe Chair*

John Spuller*
*The Dr. and Mrs. Preston H. Gada
Chair*

Flute

Anne Whaley Laney, Principal
*The Mr. and Mrs. George M.
Stephens Chair*

Mary E. Boone,
Assistant Principal
*The Dr. and Mrs. Shaler Stidham,
Jr. Chair*

Vaynu Kadiyali*
The Jack and Sing Boddie Chair

Piccolo

Vaynu Kadiyali*
The Jean Dunn Williams Chair

Oboe

Melanie Wilsden, Principal
The Hardison and Stoltze Chair

Joseph Peters,
Associate Principal,
The Lizette T. Dunham Chair

Rachel Ahn*
*The Clarence and Alice Aycock
Poe Chair*

English Horn

Joseph Peters
The Bruce and Margaret King Chair

Clarinet

Samuel Almaguer, Principal
The Mr. and Mrs. J. Christopher Walker, II Chair

Sammy Lesnick,
Assistant Principal
The Kathryn Powell and Green Flavie Cooper Chair

Bassoon

Aaron Apaza, Principal
The Mr. and Mrs. Fitzgerald S. Hudson Chair

Wenmin Zhang,
Assistant Principal,
The Beethoven Chair

French Horn

Rebekah Daley, Principal
The Mary T. McCurdy Chair

Kimberly Van Pelt,
Associate Principal
The Paul R. Villard and Gabriel Wolf Chair

Corbin Castro*
The Roger Colson and Bobbi Lyon Hackett Chair

Gabriel Mairson*
The James Marion Poyner Chair

To Be Filled
The Mary Susan Kirk Fulghum Chair

Trumpet

Paul Randall, Principal
The George Smedes Poyner Chair

David Dash*,
Associate Principal
The Henry and Martha Zaytoun and Family Chair

Trombone

John Ilika, Principal
The Thomas Warwick Steed, Jr. Family Chair

Steven Osborne*, Assistant Principal

Jonathan Randazzo**,
Assistant Principal
The Frances Armour Bryant Chair

Bass Trombone

Matthew Neff
Anonymously Endowed

Tuba

Seth Horner, Principal
The Governor and Mrs. James G. Martin, Jr. Chair

Harp

Anita Burroughs-Price
Vonda Darr

Timpani

Colin Hartnett, Principal
The Patricia R., Steven T. and George F. Hackney III Chair

Percussion

Richard Motylinski, Principal
The Margery and Earl Johnson, Jr. Chair

Rajesh Prasad,
Assistant Principal
The Abram and Frances Pascher Kanof Chair

Organ

To Be Filled
The Albert and Susan Jenkins and Family Organ Chair

Library

Stephanie Wilson, Principal
Orchestra Librarian
The Mary Colvert and Banks C. Talley Chair

Taylor Troyer,
Assistant Orchestra Librarian

*Acting position

**Leave of absence

Named musician chairs are made possible through very meaningful gifts to the Symphony's endowment. As such, these donor families are also members of the Lamar Stringfield Society.

All string players rotate stands on a periodic basis in each section with the exception of titled players: Principals, Associate Principals, and Assistant Principals.

The North Carolina Symphony is a member of the League of American Orchestras and the International Conference of Symphony and Opera Musicians.

The North Carolina Master Chorale is the Resident Chorus of the North Carolina Symphony.

The North Carolina Symphony Foundation gratefully acknowledges the generous gift of the Lupot violin from Arnold and Zenat Lerman.
†deceased