

NORTH CAROLINA  
**SYMPHONY**

# HOLIDAY POPS

WED, DEC 20, 2023 | 7:30PM

NORTHSIDE HIGH SCHOOL  
JACKSONVILLE

North Carolina Symphony  
Michelle Di Russo, *conductor*



## PROGRAM

**Leroy Anderson**  
*A Christmas Festival*

**Victor Herbert / Arr. Otto Langey**  
*March of the Toys from Babes in Toyland*

**Felix Bernard / Arr. Calvin Custer**  
*Winter Wonderland*

**Mel Tormé / Arr. Bob Lowden**  
*The Christmas Song*

**Sergei Prokofiev**  
*Troika from Lieutenant Kijé*

**Nikolai Rimsky-Korsakov**  
*Dance of the Tumblers from Snow Maiden*

**Anthony DiLorenzo**  
*Navidad Latina!*

### INTERMISSION

**Arr. Robert Krogstad**  
*Christmas at the Movies*

**Dimitri Tiomkin / Arr. Patrick Russ & Paul Henning**  
*Selections from It's a Wonderful Life*  
Prologue  
Theme  
*Christmas Eve Finale*

**Piotr Ilyich Tchaikovsky**  
*March from The Nutcracker*

**Piotr Ilyich Tchaikovsky**  
*Danse des Mirlitons from The Nutcracker*

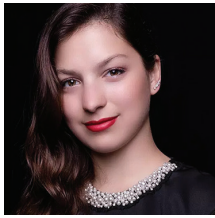
**Walter Kent / Marty Gold**  
*I'll Be Home for Christmas*

**Lee Norris**  
*Christmas "Pop" Sing-A-Long No. 1*

Will you make a gift to the North Carolina Symphony to support performances and music education programs in Onslow County? Additionally, your gift will count toward the State Challenge Grant goal, increasing the impact of your generosity by helping the Symphony earn important matching funds from the State of North Carolina.

**Please visit [ncsymphony.org/donate](https://ncsymphony.org/donate) to make your gift. Thank you!**

## About the Artists



### Michelle Di Russo, *conductor*

*The Lucy Moore Ruffin Chair*

*Michelle Di Russo is Associate Conductor of the North Carolina Symphony where she is responsible for conducting the Symphony's extensive statewide music education concerts.*

*She has conducted UNC Health Summerfest performances, Young People's Concerts, and Statewide Holiday Pops concerts with the Symphony, as well as classical subscription performances in Chapel Hill and Wilmington.*

A graceful and powerful force on the podium, Michelle Di Russo is known for her compelling interpretations, passionate musicality, and championing of contemporary music. She has recently been appointed a 2023/24 Dudamel Fellow with the Los Angeles Philharmonic and participated at the Lucerne Festival Academy. An advocate for underrepresented artists, she co-founded the organization Girls Who Conduct to support younger generations of women and non-binary conductors.

Di Russo's artistic journey began in her native country, Argentina, at the age of three with ballet lessons, followed by studies in voice and piano. She has acted on television and onstage. Di Russo holds multiple degrees in Orchestral Conducting from Pontifical Catholic University of Argentina, University of Kentucky (M.M.), and Arizona State University (D.M.A.). She is a former Freeman Conducting Fellow in Chicago Sinfonietta's prestigious Project Inclusion program and a recipient of the Concert Artists Guild's Richard S. Weinert Award.

Previously, Di Russo served as Interim Director of Orchestras at Cornell University, Assistant Conductor for the Phoenix Youth Symphony Orchestra, cover conductor and assistant for The Phoenix Symphony and Arizona Musicfest, and as a conducting fellow at the Cortona Sessions for New Music in Italy. She has also acted as cover conductor for the Minnesota Orchestra, St. Louis Symphony Orchestra, San Diego Symphony, and the National Symphony Orchestra. In the summer of 2022, she served as the Joel Revzen Conducting Fellow at Festival Napa Valley.

### CONCERT SPONSORS



### CONCERT SUPPORTERS



SIA—David Koonce

CONCERT FRIEND

First Citizens Bank

# NORTH CAROLINA **SYMPHONY**

## **HOLIDAY POPS SING-ALONG**

### **Winter Wonderland**

Sleigh bells ring, are you list'ning?  
In the lane, snow is glist'ning,  
A beautiful sight,  
we're happy tonight,  
Walkin' in a winter wonderland.

Gone away is the bluebird,  
Here to stay is the new bird;  
He sings a love song,  
as we go along,  
Walkin' in a winter wonderland.

In the meadow we can build a snowman,  
Then pretend that he is Parson Brown;  
He'll say, "Are you married?" We'll say, "No, man!  
But you can do the job when you're in town."

Later on, we'll conspire,  
As we dream by the fire,  
To face unafraid,  
the plans that we made,  
Walkin' in a winter wonderland.

### **Frosty the Snowman**

Frosty the snowman was a jolly happy soul,  
With a corncob pipe and a button nose  
And two eyes made of coal.

Frosty the snowman is a fairy tale they say,  
He was made of snow but the children know  
How he came to life one day.

There must have been some magic  
In that old silk hat they found.  
For when they placed it on his head  
He began to dance around.

Oh, Frosty the snowman  
Was alive as he could be  
And the children say he could laugh and play  
Just the same as you and me.

### **Rudolph the Red-Nosed Reindeer**

Rudolph the red-nosed reindeer  
Had a very shiny nose,  
And if you ever saw it,  
You would even say it glows.

All of the other reindeer  
Used to laugh and call him names.  
They never let poor Rudolph  
Join in any reindeer games.

Then one foggy Christmas Eve,  
Santa came to say:  
"Rudolph, with your nose so bright,  
Won't you guide my sleigh tonight?"

Then all the reindeer loved him,  
As they shouted out with glee:  
"Rudolph the red-nosed reindeer,  
You'll go down in history!"

### **White Christmas**

I'm dreaming of a white Christmas  
Just like the ones I used to know,  
Where the treetops glisten and  
children listen  
To hear sleigh bells in the snow.

I'm dreaming of a white Christmas  
With ev'ry Christmas card I write:  
"May your days be merry and bright  
And may all your Christmases be white."



# The Musicians of the North Carolina Symphony

---

**Carlos Miguel Prieto,**  
Music Director  
*The Maxine and Benjamin Swalin Chair*

Grant Llewellyn,  
Music Director Laureate

Michelle Di Russo,  
Associate Conductor  
*The Lucy Moore Ruffin Chair*

## **Violin I**

Brian Reagin, Concertmaster  
*The Annabelle Lundy Fetterman Chair*

Jessica Hung,  
Associate Concertmaster  
*The Assad Meymandi and Family Chair*

Anna Black,  
Assistant Concertmaster  
*The Anne Heartt Gregory Chair*

Karen Strittmatter Galvin,  
Assistant Concertmaster

Carol Chung\*

Emily Rist Glover  
*The Jessie Wyatt Ethridge Chair*

Paul Goldsberry  
*The Richard and Joy Cook Chair*

So Yun Kim\*\*  
*The Governor James B. Hunt, Jr. Chair*

Maria Meyer  
*The Tom and Mary Mac Bradshaw Chair*

Pablo Sánchez Pazos  
*The Phyllis ("Pat") Conrad Wells Chair*

Jessica Ryou  
*The James C. Byrd and Family Chair*

Lin-Ti Wang\*

Eileen Wynne  
*The Harvey At-Large Chair*

Erin Zehngut  
*The J. Felix Arnold Chair*

## **Violin II**

Jacqueline Saed Wolborsky,  
Principal  
*The Nancy Finch Wallace Chair*

Tiffany Kang,  
Associate Principal  
*The Blanche Martin Shaw Chair*

David Kilbride, Assistant  
Principal

Qi Cao

Janet Gayer Hall

Chris Jusell\*

Leah Latorraca\*

Oskar Ozolinch

Jeanine Wynton

## **Viola**

Samuel Gold, Principal  
*The Florence Spinks and Charles Jacob Cate and Alma Yondorf and Sylvan Hirschberg Chair*

Kurt Tseng,  
Associate Principal  
*The Betty Ellen Madry Chair*

Brian Sherwood,  
Assistant Principal

Petra Berényi

Paul Malcolm

Amy Mason  
*The J. Sidney Kirk Chair*

Sandra Schwarcz  
*The Samuel H. and Anne Latham Johnson Chair*

Kirsten Swanson\*

## **Cello**

Bonnie Thron, Principal  
*The June and Tom Roberg Chair*

Elizabeth Beilman,  
Associate Principal  
*The Sarah Carlyle Herbert Dorroh Chair*

Peng Li, Assistant Principal,  
*Anonymously Endowed*

Yewon Ahn  
*Anonymously Endowed*

David Meyer  
*The Nell Hirschberg Chair*

Marc Moskowitz\*  
*The William Charles Rankin Chair*

Lisa Howard Shaughnessy  
*The Sara Wilson Hodgkins Chair*

Nathaniel Yaffe  
*The Secretary of Cultural Resources Betty Ray McCain Chair*

## **Double Bass**

Leonid Finkelshteyn, Principal  
*The Martha and Peyton Woodson Chair*

Bruce Ridge\*,  
Associate Principal  
*The John C. and Margaret P. Parker Chair*

Craig Brown  
*The Mark W. McClure Foundation Chair*

Erik Dyke  
*The Harlee H. and Pauline G. Jobe Chair*

John Spuller\*  
*The Dr. and Mrs. Preston H. Gada Chair*

## **Flute**

Anne Whaley Laney, Principal  
*The Mr. and Mrs. George M. Stephens Chair*

Mary E. Boone,  
Assistant Principal  
*The Dr. and Mrs. Shaler Stidham, Jr. Chair*

Vaynu Kadiyali\*  
*The Jack and Sing Boddie Chair*

## **Piccolo**

Vaynu Kadiyali\*  
*The Jean Dunn Williams Chair*

## **Oboe**

Melanie Wilsden, Principal  
*The Hardison and Stoltze Chair*

Joseph Peters,  
Associate Principal,  
*The Lizette T. Dunham Chair*

Rachel Ahn\*  
*The Clarence and Alice Aycock Poe Chair*

## English Horn

Joseph Peters  
*The Bruce and Margaret King  
Chair*

## Clarinet

Samuel Almaguer, Principal  
*The Mr. and Mrs. J. Christopher  
Walker, II Chair*

Sammy Lesnick,  
Assistant Principal  
*The Kathryn Powell and Green  
Flavie Cooper Chair*

## Bassoon

Aaron Apaza, Principal  
*The Mr. and Mrs. Fitzgerald S.  
Hudson Chair*

Wenmin Zhang,  
Assistant Principal,  
*The Beethoven Chair*

## French Horn

Rebekah Daley, Principal  
*The Mary T. McCurdy Chair*

Kimberly Van Pelt,  
Associate Principal  
*The Paul R. Villard and Gabriel  
Wolf Chair*

Corbin Castro\*  
*The Roger Colson and Bobbi  
Lyon Hackett Chair*

Gabriel Mairson\*  
*The James Marion Poyner Chair*

To Be Filled  
*The Mary Susan Kirk Fulghum  
Chair*

## Trumpet

Paul Randall, Principal  
*The George Smedes Poyner Chair*

David Dash\*,  
Associate Principal  
*The Henry and Martha Zaytoun  
and Family Chair*

## Trombone

John Ilika, Principal  
*The Thomas Warwick Steed, Jr.  
Family Chair*

Steven Osborne\*, Assistant  
Principal

Jonathan Randazzo\*\*,  
Assistant Principal  
*The Frances Armour Bryant Chair*

## Bass Trombone

Matthew Neff  
*Anonymously Endowed*

## Tuba

Seth Horner, Principal  
*The Governor and Mrs. James G.  
Martin, Jr. Chair*

## Harp

Anita Burroughs-Price  
Vonda Darr

## Timpani

Colin Hartnett, Principal  
*The Patricia R., Steven T. and  
George F. Hackney III Chair*

## Percussion

Richard Motylinski, Principal  
*The Margery and Earl Johnson,  
Jr. Chair*

Rajesh Prasad,  
Assistant Principal  
*The Abram and Frances Pascher  
Kanof Chair*

## Organ

To Be Filled  
*The Albert and Susan Jenkins  
and Family Organ Chair*

## Library

Stephanie Wilson, Principal  
Orchestra Librarian  
*The Mary Colvert and Banks C.  
Talley Chair*

Taylor Troyer,  
Assistant Orchestra Librarian

\*Acting position

\*\*Leave of absence

**Named musician chairs  
are made possible through  
very meaningful gifts to the  
Symphony's endowment. As  
such, these donor families are  
also members of the Lamar  
Stringfield Society.**

*All string players rotate stands on  
a periodic basis in each section  
with the exception of titled  
players: Principals, Associate  
Principals, and Assistant  
Principals.*

*The North Carolina Symphony  
is a member of the League of  
American Orchestras and the  
International Conference of  
Symphony and Opera Musicians.*

*The North Carolina Master  
Chorale is the Resident Chorus of  
the North Carolina Symphony.*

*The North Carolina Symphony  
Foundation gratefully  
acknowledges the generous  
gift of the Lupot violin from  
Arnold and Zenat Lerman.  
†deceased*