

NORTH CAROLINA **SYMPHONY**
CARNIVAL OF THE ANIMALS

SATURDAY, APR 1, 2023 | 4PM

Meymandi Concert Hall
Woolner Stage



Raleigh



YOUNG PEOPLE'S CONCERT
SERIES SPONSOR



This concert is made possible in part by The Drs. James and Mary Susan Fulghum Fund.

The North Carolina Symphony gratefully acknowledges financial support from Wake County, the City of Raleigh, and the State of North Carolina.



NORTH CAROLINA
SYMPHONY

Carnival of the Animals

Sat, Apr 1, 2023 | 4pm

MEYMANDI CONCERT HALL, WOOLNER STAGE

MARTIN MARIETTA CENTER FOR THE PERFORMING ARTS

RALEIGH

North Carolina Symphony

Michelle Di Russo, *conductor*

Paperhand Puppet Intervention

Clara Yang, *piano*

Mimi Solomon, *piano*

Edward Elgar

The Wild Bears from *The Wand of Youth*, Suite No. 2, Op. 1

Gioachino Rossini

Overture to *The Thieving Magpie*

Leroy Anderson

The Waltzing Cat

George Gershwin / Arr. Sol Berkowitz

Walking the Dog

Ottorino Respighi

The Hen and The Cuckoo from *The Birds*

Camille Saint-Saëns

The Carnival of the Animals

I. Introduction and *Royal March of the Lion*

II. *Hens and Roosters*

III. *Swift Animals*

IV. *Tortoises*

V. *The Elephant*

VI. *Kangaroos*

VII. *Aquarium*

VIII. *People with Long Ears*

IX. *The Cuckoo in the Depths of the Forest*

X. *Aviary*

XI. *Pianists*

XII. *Fossils*

XIII. *The Swan*

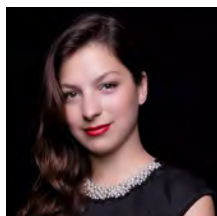
XIV. *Finale*

Paperhand Puppet Intervention

Clara Yang, *piano*

Mimi Solomon, *piano*

About the Performers



Michelle Di Russo, conductor

The Maxine and Benjamin Swalin Chair

Michelle Di Russo is Associate Conductor of the North Carolina Symphony where she is responsible for conducting the Symphony's extensive statewide music education concerts. She has conducted UNC Health

Summerfest performances, Young People's Concerts, and Statewide Holiday Pops concerts with the Symphony, and has been featured in the Symphony's "Behind the Music" concert preview videos. Recently Di Russo conducted the orchestra in statewide classical subscription performances and led the Symphony's first Holiday Pops concert in Spanish in Raleigh.

A graceful and powerful force on the podium, Michelle Di Russo is known for her compelling interpretations, passionate musicality, and championing of contemporary music. She is an advocate for underrepresented artists and in 2020 co-founded the organization Girls Who Conduct to support younger generations of women and non-binary conductors in overcoming obstacles they face due to their gender.

Di Russo's artistic journey began in her native country, Argentina, at the age of three with ballet lessons, followed by studies in voice and piano. She has acted on television and onstage. Di Russo holds multiple degrees in Orchestral Conducting from Pontifical Catholic University of Argentina, University of Kentucky (M.M.), and Arizona State University (D.M.A.). She is a Freeman Conducting Fellow in Chicago Sinfonietta's prestigious Project Inclusion program and a recipient of the Concert Artists Guild's Richard S. Weinert Award.

Previously, Di Russo served as Interim Director of Orchestras at Cornell University, Assistant Conductor for the Phoenix Youth Symphony Orchestra, cover conductor and assistant for The Phoenix Symphony and Arizona Musicfest, and as a conducting fellow at the Cortona Sessions for New Music in Italy. She has also acted as cover conductor for the Minnesota Orchestra, St. Louis Symphony Orchestra, San Diego Symphony, and the National Symphony Orchestra. In the summer of 2022, she served as the Joel Revzen Conducting Fellow at Festival Napa Valley.

Paperhand Puppet Intervention

Paperhand Puppet Intervention previously performed with the North Carolina Symphony for The Carnival of the Animals in 2019.



Puppeteers for this performance:

Donovan Zimmerman	Johnny Waken
Gretchen Adracie	Sophie Joy
Barb Ford	Shannon Baxter
Ella Baxter	Michael Gilchrist

In 1998 Paperhand Puppet Intervention's directors Donovan Zimmerman and Jan Burger met and began a collaboration of epic proportions. Since then, they have been using papier-mâché, cardboard, bamboo, your old house paints, cloth, and other assorted junk (treasure to us!) to create incredible giant puppets, masks, shadow plays, and spectacle performances for all ages.

They continue to tell stories, beat drums, sew cloth, get sweaty, push boundaries, and carry heavy things to help make the world a better place. Paperhand's parades, pageants, and award-winning performances aim to be an inspiration, a call to action, and a celebration for everyone to enjoy!



Mimi Solomon, piano

Mimi Solomon previously performed with the North Carolina Symphony for The Carnival of the Animals in 2021.

American pianist Mimi Solomon is a chamber musician, soloist, and teacher. She has performed throughout the

United States, China, Japan, and Europe, has appeared as soloist with orchestras including Shanghai Symphony Orchestra, Philharmonia Virtuosi, and Yale Symphony Orchestra, and has been featured on numerous radio and television broadcasts. She also regularly appears at music festivals on both sides of the Atlantic.

An enthusiastic educator, Solomon is co-Artistic Director of the MYCO Youth Chamber Orchestra, spends part of every year coaching and performing chamber music at Kinhaven Music School in Vermont, and has taught at Cornell University, East Carolina University, and Ithaca College. She is currently on the faculty of the University of North Carolina at Chapel Hill.

Solomon graduated *cum laude* in East Asian Studies from Yale and went on to receive a master's degree in music from The Juilliard School.



Clara Yang, piano

Clara Yang has performed with the North Carolina Symphony for previous classical concerts in Raleigh, Chapel Hill, New Bern, and elsewhere, as well as for The Carnival of the Animals in 2019.

Clara Yang is Associate Professor of Music and Head of Keyboard Studies at UNC-Chapel Hill and appears internationally as a concert soloist, in recital, and at music festivals. In 2016, she performed the world premiere of the piano concerto *Four Spirits*, written for her by Chen Yi, with the China Philharmonic Orchestra. Her solo album *Folding Time* was released in 2015.

Dr. Yang's students have won prizes in state, national, and international competitions. She received her doctorate in piano performance at the Eastman School of Music and holds degrees from the Yale School of Music and the University of Southern California.

About Our Musicians

Carlos Miguel Prieto,
Music Director Designate
The Maxine and Benjamin Swalin Chair

Grant Llewellyn,
Music Director Laureate

Michelle Di Russo,
Associate Conductor
The Lucy Moore Ruffin Chair

Violin I

Brian Reagin, Concertmaster
The Annabelle Lundy Fetterman Chair

To Be Filled, Associate Concertmaster
The Assad Meymandi and Family Chair

To Be Filled, Assistant Concertmaster
The Anne Heartt Gregory Chair

Karen Strittmatter Galvin, Assistant
Concertmaster

Emily Rist Glover
The Jessie Wyatt Ethridge Chair

Paul Goldsberry
The Richard and Joy Cook Chair

So Yun Kim
The Governor James B. Hunt, Jr. Chair

Marilyn Kouba
The Phyllis ("Pat") Conrad Wells Chair

Maria Meyer
The Tom and Mary Mac Bradshaw Chair

Pablo Sánchez Pazos

Jessica Ryou

Lin-Ti Wang*

Eileen Wynne
The Harvey At-Large Chair

Erin Zehngut
The J. Felix Arnold Chair

To Be Filled
The James C. Byrd and Family Chair

**The North Carolina Symphony Foundation
gratefully acknowledges the generous gift of
the Lupot violin from Arnold and Zenat
Lerman.**

**deceased*

Violin II

Jacqueline Saed Wolborsky, Principal
The Nancy Finch Wallace Chair

To Be Filled, Associate Principal
The Blanche Martin Shaw Chair

David Kilbride, Assistant Principal

Qi Cao

Janet Gayer Hall

Oskar Ozolinch

Anton Shelepov

Jeanine Wynton

To Be Filled

Viola

Samuel Gold, Principal
*The Florence Spinks and Charles Jacob
Cate and Alma Yondorf and Sylvan
Hirschberg Chair*

Kurt Tseng, Associate Principal
The Betty Ellen Madry Chair

Brian Sherwood, Assistant Principal

Petra Berényi

Paul Malcolm

Amy Mason
The J. Sidney Kirk Chair

Sandra Schwarcz
*The Samuel H. and Anne Latham Johnson
Chair*

Kirsten Swanson*

Cello

Bonnie Thron, Principal
The June and Tom Roberg Chair

Elizabeth Beilman, Associate Principal
The Sarah Carlyle Herbert Dorroh Chair

Peng Li, Assistant Principal
Anonymously Endowed

Yewon Ahn
Anonymously Endowed

Sunrise Kim**
The William Charles Rankin Chair

Rosalind Leavell*

David Meyer**
The Nell Hirschberg Chair

Marc Moskovitz*

Lisa Howard Shaughnessy
The Sara Wilson Hodgkins Chair

Nathaniel Yaffe
*The Secretary of Cultural Resources
Betty Ray McCain Chair*

Double Bass

Leonid Finkelshteyn, Principal
The Martha and Peyton Woodson Chair

Bruce Ridge*, Associate Principal
The John C. and Margaret P. Parker Chair

Craig Brown
The Mark W. McClure Foundation Chair

Erik Dyke
The Harllee H. and Pauline G. Jobe Chair

John Spuller*
The Dr. and Mrs. Preston H. Gada Chair

Flute

Anne Whaley Laney, Principal
*The Mr. and Mrs. George M. Stephens
Chair*

Mary E. Boone, Assistant Principal
The Dr. and Mrs. Shaler Stidham, Jr. Chair

Elizabeth Anderton Lunsford
The Jack and Sing Boddie Chair

Piccolo

Elizabeth Anderton Lunsford
The Jean Dunn Williams Chair

Oboe

Melanie Wilsden, Principal
The Hardison and Stoltze Chair

Joseph Peters, Associate Principal
The Lizette T. Dunham Chair

Amanda LaBrecque*

Sandra Posch**
The Clarence and Alice Aycock Poe Chair

English Horn

Joseph Peters
The Bruce and Margaret King Chair

Clarinet

Samuel Almaguer, Principal
The Mr. and Mrs. J. Christopher Walker, II Chair

Zhenyu Wang*, Assistant Principal
The Kathryn Powell and Green Flavie Cooper Chair

Bassoon

Aaron Apaza, Principal
The Mr. and Mrs. Fitzgerald S. Hudson Chair

Wenmin Zhang, Assistant Principal
The Beethoven Chair

French Horn

Rebekah Daley, Principal
The Mary T. McCurdy Chair

Kimberly Van Pelt, Associate Principal
The Paul R. Villard and Gabriel Wolf Chair

Corbin Castro*
The Roger Colson and Bobbi Lyon Hackett Chair

Tanner West*
The James Marion Poyner Chair

To Be Filled
The Mary Susan Kirk Fulghum Chair

Trumpet

Paul Randall, Principal
The George Smedes Poyner Chair

David Dash*, Associate Principal
The Henry and Martha Zaytoun and Family Chair

Trombone

John Ilika, Principal
The Thomas Warwick Steed, Jr. Family Chair

Jonathan Randazzo, Assistant Principal
The Frances Armour Bryant Chair

Bass Trombone

Matthew Neff
Anonymously Endowed

Tuba

Seth Horner, Principal
The Governor and Mrs. James G. Martin, Jr. Chair

Harp

Anita Burroughs-Price
Vonda Darr

Timpani

Colin Hartnett, Principal
The Patricia R., Steven T. and George F. Hackney III Chair

Percussion

Richard Motylinski, Principal
The Margery and Earl Johnson, Jr. Chair

Rajesh Prasad, Assistant Principal
The Abram and Frances Pascher Kanof Chair

Organ

To Be Filled
The Albert and Susan Jenkins and Family Organ Chair

Library

Stephanie Wilson, Principal Orchestra Librarian
The Mary Colvert and Banks C. Talley Chair

*Acting position

**Leave of absence

Named musician chairs are made possible through very meaningful gifts to the Symphony's endowment. As such, these donor families are also members of the Lamar Stringfield Society.

All string players rotate stands on a periodic basis in each section with the exception of titled players: Principals, Associate Principals, and Assistant Principals.

The North Carolina Symphony is a member of the League of American Orchestras and the International Conference of Symphony and Opera Musicians.

The North Carolina Master Chorale is the Resident Chorus of the North Carolina Symphony.

Thank you to the generous individuals, businesses, foundations, and community partners who support the North Carolina Symphony through contributions each season. The Symphony's performances and extensive music education and community service programs are made possible by your support.

Scan here for a list of our generous donors:



Name _____ Age _____

Phone _____ Email _____



NORTH CAROLINA **SYMPHONY**

Carnival of the Animals

SAT, APR 1, 2023 | 4PM

YOUNG PEOPLE'S
SERIES SPONSOR

WakeMed 
Children's

*This concert is made possible in part by
The Drs. James and Mary Susan Fulghum Fund.*