

# NORTH CAROLINA **SYMPHONY**

# CARNIVAL OF THE ANIMALS

**OPEN REHEARSAL**  
**FRIDAY, MAR 31, 2023 | 7PM**

Meymandi Concert Hall  
Woolner Stage



Raleigh



YOUNG PEOPLE'S CONCERT  
SERIES SPONSOR



*This concert is made possible in part by The Drs. James and Mary Susan Fulghum Fund.*

The North Carolina Symphony gratefully acknowledges financial support from Wake County, the City of Raleigh, and the State of North Carolina.



NORTH CAROLINA  
**SYMPHONY**

# Carnival of the Animals

Sat, Mar 31, 2023 | 7pm  
MEYMANDI CONCERT HALL, WOOLNER STAGE  
MARTIN MARIETTA CENTER FOR THE PERFORMING ARTS  
RALEIGH

**North Carolina Symphony**  
Michelle Di Russo, *conductor*  
**Paperhand Puppet Intervention**  
Clara Yang, *piano*  
Mimi Solomon, *piano*

---

**Edward Elgar**  
*The Wild Bears* from *The Wand of Youth*, Suite No. 2, Op. 1

**Gioachino Rossini**  
Overture to *The Thieving Magpie*

**Leroy Anderson**  
*The Waltzing Cat*

**George Gershwin** / Arr. Sol Berkowitz  
*Walking the Dog*

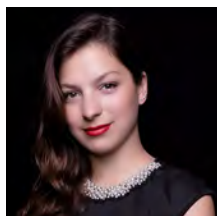
**Ottorino Respighi**  
*The Hen and The Cuckoo* from *The Birds*

**Camille Saint-Saëns**  
*The Carnival of the Animals*

- I. Introduction and *Royal March of the Lion*
- II. *Hens and Roosters*
- III. *Swift Animals*
- IV. *Tortoises*
- V. *The Elephant*
- VI. *Kangaroos*
- VII. *Aquarium*
- VIII. *People with Long Ears*
- IX. *The Cuckoo in the Depths of the Forest*
- X. *Aviary*
- XI. *Pianists*
- XII. *Fossils*
- XIII. *The Swan*
- XIV. *Finale*

Paperhand Puppet Intervention  
Clara Yang, *piano*  
Mimi Solomon, *piano*

# About the Performers .....



## **Michelle Di Russo, conductor**

*The Maxine and Benjamin Swalin Chair*

*Michelle Di Russo is Associate Conductor of the North Carolina Symphony where she is responsible for conducting the Symphony's extensive statewide music education concerts. She has conducted UNC Health*

*Summerfest performances, Young People's Concerts, and Statewide Holiday Pops concerts with the Symphony, and has been featured in the Symphony's "Behind the Music" concert preview videos. Recently Di Russo conducted the orchestra in statewide classical subscription performances and led the Symphony's first Holiday Pops concert in Spanish in Raleigh.*

A graceful and powerful force on the podium, Michelle Di Russo is known for her compelling interpretations, passionate musicality, and championing of contemporary music. She is an advocate for underrepresented artists and in 2020 co-founded the organization Girls Who Conduct to support younger generations of women and non-binary conductors in overcoming obstacles they face due to their gender.

Di Russo's artistic journey began in her native country, Argentina, at the age of three with ballet lessons, followed by studies in voice and piano. She has acted on television and onstage. Di Russo holds multiple degrees in Orchestral Conducting from Pontifical Catholic University of Argentina, University of Kentucky (M.M.), and Arizona State University (D.M.A.). She is a Freeman Conducting Fellow in Chicago Sinfonietta's prestigious Project Inclusion program and a recipient of the Concert Artists Guild's Richard S. Weinert Award.

Previously, Di Russo served as Interim Director of Orchestras at Cornell University, Assistant Conductor for the Phoenix Youth Symphony Orchestra, cover conductor and assistant for The Phoenix Symphony and Arizona Musicfest, and as a conducting fellow at the Cortona Sessions for New Music in Italy. She has also acted as cover conductor for the Minnesota Orchestra, St. Louis Symphony Orchestra, San Diego Symphony, and the National Symphony Orchestra. In the summer of 2022, she served as the Joel Revzen Conducting Fellow at Festival Napa Valley.

## **Paperhand Puppet Intervention**

*Paperhand Puppet Intervention previously performed with the North Carolina Symphony for The Carnival of the Animals in 2019.*



Puppeteers for this performance:

Donovan Zimmerman	Johnny Waken
Gretchen Adracie	Sophie Joy
Barb Ford	Shannon Baxter
Ella Baxter	Michael Gilchrist

In 1998 Paperhand Puppet Intervention's directors Donovan Zimmerman and Jan Burger met and began a collaboration of epic proportions. Since then, they have been using papier-mâché, cardboard, bamboo, your old house paints, cloth, and other assorted junk (treasure to us!) to create incredible giant puppets, masks, shadow plays, and spectacle performances for all ages.

They continue to tell stories, beat drums, sew cloth, get sweaty, push boundaries, and carry heavy things to help make the world a better place. Paperhand's parades, pageants, and award-winning performances aim to be an inspiration, a call to action, and a celebration for everyone to enjoy!



## **Mimi Solomon, piano**

*Mimi Solomon previously performed with the North Carolina Symphony for The Carnival of the Animals in 2021.*

American pianist Mimi Solomon is a chamber musician, soloist, and teacher. She has performed throughout the

United States, China, Japan, and Europe, has appeared as soloist with orchestras including Shanghai Symphony Orchestra, Philharmonia Virtuosi, and Yale Symphony Orchestra, and has been featured on numerous radio and television broadcasts. She also regularly appears at music festivals on both sides of the Atlantic.

An enthusiastic educator, Solomon is co-Artistic Director of the MYCO Youth Chamber Orchestra, spends part of every year coaching and performing chamber music at Kinhaven Music School in Vermont, and has taught at Cornell University, East Carolina University, and Ithaca College. She is currently on the faculty of the University of North Carolina at Chapel Hill.

Solomon graduated *cum laude* in East Asian Studies from Yale and went on to receive a master's degree in music from The Juilliard School.



## **Clara Yang, piano**

*Clara Yang has performed with the North Carolina Symphony for previous classical concerts in Raleigh, Chapel Hill, New Bern, and elsewhere, as well as for The Carnival of the Animals in 2019.*

Clara Yang is Associate Professor of Music and Head of Keyboard Studies at UNC-Chapel Hill and appears internationally as a concert soloist, in recital, and at music festivals. In 2016, she performed the world premiere of the piano concerto *Four Spirits*, written for her by Chen Yi, with the China Philharmonic Orchestra. Her solo album *Folding Time* was released in 2015.

Dr. Yang's students have won prizes in state, national, and international competitions. She received her doctorate in piano performance at the Eastman School of Music and holds degrees from the Yale School of Music and the University of Southern California.

## About Our Musicians

---

Carlos Miguel Prieto,  
Music Director Designate  
*The Maxine and Benjamin Swalin Chair*

Grant Llewellyn,  
Music Director Laureate

Michelle Di Russo,  
Associate Conductor  
*The Lucy Moore Ruffin Chair*

### Violin I

Brian Reagin, Concertmaster  
*The Annabelle Lundy Fetterman Chair*

To Be Filled, Associate Concertmaster  
*The Assad Meymandi and Family Chair*

To Be Filled, Assistant Concertmaster  
*The Anne Heartt Gregory Chair*

Karen Strittmatter Galvin, Assistant  
Concertmaster

Emily Rist Glover  
*The Jessie Wyatt Ethridge Chair*

Paul Goldsberry  
*The Richard and Joy Cook Chair*

So Yun Kim  
*The Governor James B. Hunt, Jr. Chair*

Marilyn Kouba  
*The Phyllis ("Pat") Conrad Wells Chair*

Maria Meyer  
*The Tom and Mary Mac Bradshaw Chair*

Pablo Sánchez Pazos

Jessica Ryou

Lin-Ti Wang\*

Eileen Wynne  
*The Harvey At-Large Chair*

Erin Zehngut  
*The J. Felix Arnold Chair*

To Be Filled  
*The James C. Byrd and Family Chair*

**The North Carolina Symphony Foundation gratefully acknowledges the generous gift of the Lupot violin from Arnold and Zenat Lerman.**

*\*deceased*

### Violin II

Jacqueline Saed Wolborsky, Principal  
*The Nancy Finch Wallace Chair*

To Be Filled, Associate Principal  
*The Blanche Martin Shaw Chair*

David Kilbride, Assistant Principal

Qi Cao

Janet Gayer Hall

Oskar Ozolinch

Anton Shelepov

Jeanine Wynton

To Be Filled

### Viola

Samuel Gold, Principal  
*The Florence Spinks and Charles Jacob Cate and Alma Yondorf and Sylvan Hirschberg Chair*

Kurt Tseng, Associate Principal  
*The Betty Ellen Madry Chair*

Brian Sherwood, Assistant Principal

Petra Berényi

Paul Malcolm

Amy Mason  
*The J. Sidney Kirk Chair*

Sandra Schwarcz  
*The Samuel H. and Anne Latham Johnson Chair*

Kirsten Swanson\*

### Cello

Bonnie Thron, Principal  
*The June and Tom Roberg Chair*

Elizabeth Beilman, Associate Principal  
*The Sarah Carlyle Herbert Dorroh Chair*

Peng Li, Assistant Principal  
*Anonymously Endowed*

Yewon Ahn  
*Anonymously Endowed*

Sunrise Kim\*\*  
*The William Charles Rankin Chair*

Rosalind Leavell\*

David Meyer\*\*  
*The Nell Hirschberg Chair*

Marc Moskovitz\*

Lisa Howard Shaughnessy  
*The Sara Wilson Hodgkins Chair*

Nathaniel Yaffe  
*The Secretary of Cultural Resources Betty Ray McCain Chair*

### Double Bass

Leonid Finkelshteyn, Principal  
*The Martha and Peyton Woodson Chair*

Bruce Ridge\*, Associate Principal  
*The John C. and Margaret P. Parker Chair*

Craig Brown  
*The Mark W. McClure Foundation Chair*

Erik Dyke  
*The Harllee H. and Pauline G. Jobe Chair*

John Spuller\*  
*The Dr. and Mrs. Preston H. Gada Chair*

### Flute

Anne Whaley Laney, Principal  
*The Mr. and Mrs. George M. Stephens Chair*

Mary E. Boone, Assistant Principal  
*The Dr. and Mrs. Shaler Stidham, Jr. Chair*

Elizabeth Anderton Lunsford  
*The Jack and Sing Boddie Chair*

### Piccolo

Elizabeth Anderton Lunsford  
*The Jean Dunn Williams Chair*

## Oboe

Melanie Wilsden, Principal  
*The Hardison and Stoltze Chair*

Joseph Peters, Associate Principal  
*The Lizette T. Dunham Chair*

Amanda LaBrecque\*

Sandra Posch\*\*  
*The Clarence and Alice Aycock Poe Chair*

## English Horn

Joseph Peters  
*The Bruce and Margaret King Chair*

## Clarinet

Samuel Almaguer, Principal  
*The Mr. and Mrs. J. Christopher Walker, II Chair*

Zhenyu Wang\*, Assistant Principal  
*The Kathryn Powell and Green Flavie Cooper Chair*

## Bassoon

Aaron Apaza, Principal  
*The Mr. and Mrs. Fitzgerald S. Hudson Chair*

Wenmin Zhang, Assistant Principal  
*The Beethoven Chair*

## French Horn

Rebekah Daley, Principal  
*The Mary T. McCurdy Chair*

Kimberly Van Pelt, Associate Principal  
*The Paul R. Villard and Gabriel Wolf Chair*

Corbin Castro\*  
*The Roger Colson and Bobbi Lyon Hackett Chair*

Tanner West\*  
*The James Marion Poyner Chair*

To Be Filled  
*The Mary Susan Kirk Fulghum Chair*

## Trumpet

Paul Randall, Principal  
*The George Smedes Poyner Chair*

David Dash\*, Associate Principal  
*The Henry and Martha Zaytoun and Family Chair*

## Trombone

John Ilika, Principal  
*The Thomas Warwick Steed, Jr. Family Chair*

Jonathan Randazzo, Assistant Principal  
*The Frances Armour Bryant Chair*

## Bass Trombone

Matthew Neff  
*Anonymously Endowed*

## Tuba

Seth Horner, Principal  
*The Governor and Mrs. James G. Martin, Jr. Chair*

## Harp

Anita Burroughs-Price  
Vonda Darr

## Timpani

Colin Hartnett, Principal  
*The Patricia R., Steven T. and George F. Hackney III Chair*

## Percussion

Richard Motylinski, Principal  
*The Margery and Earl Johnson, Jr. Chair*

Rajesh Prasad, Assistant Principal  
*The Abram and Frances Pascher Kanof Chair*

## Organ

To Be Filled  
*The Albert and Susan Jenkins and Family Organ Chair*

## Library

Stephanie Wilson, Principal Orchestra Librarian  
*The Mary Colvert and Banks C. Talley Chair*

\*Acting position

\*\*Leave of absence

*Named musician chairs are made possible through very meaningful gifts to the Symphony's endowment. As such, these donor families are also members of the Lamar Stringfield Society.*

*All string players rotate stands on a periodic basis in each section with the exception of titled players: Principals, Associate Principals, and Assistant Principals.*

*The North Carolina Symphony is a member of the League of American Orchestras and the International Conference of Symphony and Opera Musicians.*

*The North Carolina Master Chorale is the Resident Chorus of the North Carolina Symphony.*

**Thank you** to the generous individuals, businesses, foundations, and community partners who support the North Carolina Symphony through contributions each season. The Symphony's performances and extensive music education and community service programs are made possible by your support.

Scan here for a list of our generous donors:



Name \_\_\_\_\_ Age \_\_\_\_\_

Phone \_\_\_\_\_ Email \_\_\_\_\_



NORTH CAROLINA **SYMPHONY**

# Carnival of the Animals

SAT, APR 1, 2023 | 4PM

YOUNG PEOPLE'S  
SERIES SPONSOR

WakeMed  
Children's

*This concert is made possible in part by  
The Drs. James and Mary Susan Fulghum Fund.*