

NORTH CAROLINA
SYMPHONY



UNC HEALTH PRESENTS

SUMMERFEST 2023

THE MUSIC OF WHITNEY HOUSTON

SAT, JUN 3, 2023 | 8PM

Koka Booth Amphitheatre
Cary



PRESENTED BY



SERIES
SPONSORED BY



The North Carolina Symphony gratefully acknowledges financial support from Wake County, the Town of Cary, and the State of North Carolina.

PICNIC OF THE WEEK PARTNER



NORTH CAROLINA
SYMPHONY

The Music of Whitney Houston

Sat, Jun 3, 2023 | 8pm
KOKA BOOTH AMPHITHEATRE
CARY

North Carolina Symphony
Michelle Di Russo, *conductor*
Rashidra Scott, *vocals*

Dolly Parton
"I Will Always Love You"

L.A. Reid & Babyface
"I'm Your Baby Tonight"

Dean Pitchford and Michael Gore
"All the Man That I Need"

David Foster & Linda Thompson
"I Have Nothing"

Michael Masser & Gerry Goffin
"Saving All My Love for You"

Michael Masser/Linda Creed
"Greatest Love of All"

Nickolas Ashford & Valerie Simpson
"I'm Every Woman"

**George Merrill, Shannon Rubicam, &
Narada Michael Walden**
"How Will I Know?"

**LaShawn Daniels, Rodney Jerkins, Fred Jerkins III,
Isaac Phillips, & Toni Estes**
"It's Not Right But It's OK"

Michael Masser & Will Jennings
"Didn't We Almost Have It All?"

Albert Hammond & John Bettis
"One Moment in Time"

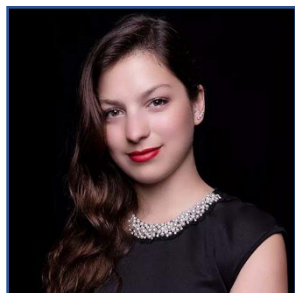
Billy Steinberg & Tom Kelly
"So Emotional"

Frank Wildhorn & Chuck Jackson
"Where Do Broken Hearts Go?"

**Whitney Houston, Babyface, Daryl Simmons, &
L.A. Reid**
"Queen of the Night"

Arrangements by Brent Havens

About the Artists



Michelle Di Russo, conductor
The Maxine and Benjamin Swalin Chair

Michelle Di Russo is Associate Conductor of the North Carolina Symphony where she is responsible for conducting the Symphony's extensive statewide music education concerts. She has conducted UNC Health Summerfest performances, Young People's Concerts, and Statewide Holiday Pops concerts with the Symphony. Recently Di Russo has conducted the orchestra in statewide classical subscription performances and led the Symphony's first Holiday Pops concert in Spanish in Raleigh.

A graceful and powerful force on the podium, Michelle Di Russo is known for her compelling interpretations, passionate musicality, and championing of contemporary music. She is an advocate for underrepresented artists and in 2020 co-founded the organization Girls Who Conduct to support younger generations of women and non-binary conductors in overcoming obstacles they face due to their gender.

Di Russo's artistic journey began in her native country, Argentina, at the age of three with ballet lessons, followed by studies in voice and piano. She has acted on television and onstage. Di Russo holds multiple degrees in Orchestral Conducting from Pontifical Catholic University of Argentina, University of Kentucky (M.M.), and Arizona State University (D.M.A.). She is a Freeman Conducting Fellow in Chicago Sinfonietta's prestigious Project Inclusion program and a recipient of the Concert Artists Guild's Richard S. Weinert Award.

Previously, Di Russo served as Interim Director of Orchestras at Cornell University, Assistant Conductor for the Phoenix Youth Symphony Orchestra, cover conductor and assistant for The Phoenix Symphony and Arizona Musicfest, and as a conducting fellow at the Cortona Sessions for New Music in Italy. She has also acted as cover conductor for the Minnesota Orchestra, St. Louis Symphony Orchestra, San Diego Symphony, and the National Symphony Orchestra. In the summer of 2022, she served as the Joel Revzen Conducting Fellow at Festival Napa Valley.



Rashidra Scott, vocals

These concerts are Rashidra Scott's debut with the North Carolina Symphony.

At four years old, "The Greatest Love of All" was the first song Rashidra Scott sang. From an early age she was known around town as "the little girl with the big voice." From community musical theatre to church music ministry, she was constantly in demand for civic and social performances at local and national events.

After graduating with a bachelor's degree in music from Boston's Berklee College of Music, Scott spent four years singing for Walt Disney Entertainment as a featured vocalist on Disney Cruise Line and *Tarzan Rocks!* at Disney's Animal Kingdom. The highlight was being a proud member of the opening team of Hong Kong Disneyland as Nala in *The Festival of The Lion King*.

After living in Hong Kong for nine months Scott moved to New York, where projects have included *Ain't Too Proud: The Life and Times of the Temptations*. She has been on Broadway in *Beautiful: The Carole King Musical*, *Sister Act*, *Hair*, *Finian's Rainbow*, and *Avenue Q*. She was on the road as a background vocalist for Patti Austin's *BebopElla!* tour in conjunction with the release of Austin's Ella Fitzgerald tribute album *For Ella*.

Scott's television appearances include Violet (the singing nurse) on *Rescue Me*, as well as *Late Night with Jimmy Fallon*, *Dancing with the Stars*, the 2011 and 2014 Tony Awards, *The View*, *Good Morning America*, *The Today Show*, *The Wendy Williams Show*, the Walt Disney World Christmas Parade, and Macy's Thanksgiving Day Parade. She is also a featured vocalist on the Grammy award-winning cast album for *Beautiful: The Carole King Musical*.

About Our Musicians

Carlos Miguel Prieto,
Music Director Designate
The Maxine and Benjamin Swalin Chair

Grant Llewellyn,
Music Director Laureate

Michelle Di Russo,
Associate Conductor
The Lucy Moore Ruffin Chair

Violin I

Brian Reagin, Concertmaster
The Annabelle Lundy Fetterman Chair

To Be Filled, Associate Concertmaster
The Assad Meymandi and Family Chair

Anna Black, Assistant Concertmaster
The Anne Heartt Gregory Chair

Karen Strittmatter Galvin, Assistant
Concertmaster

Emily Rist Glover
The Jessie Wyatt Ethridge Chair

Paul Goldsberry
The Richard and Joy Cook Chair

So Yun Kim
The Governor James B. Hunt, Jr. Chair

Marilyn Kouba
The Phyllis ("Pat") Conrad Wells Chair

Maria Meyer
The Tom and Mary Mac Bradshaw Chair

Pablo Sánchez Pazos

Jessica Ryou

Lin-Ti Wang*

Eileen Wynne
The Harvey At-Large Chair

Erin Zehngut
The J. Felix Arnold Chair

To Be Filled
The James C. Byrd and Family Chair

**The North Carolina Symphony Foundation
gratefully acknowledges the generous gift of
the Lupot violin from Arnold and Zenat
Lerman.**

**deceased*

Violin II

Jacqueline Saed Wolborsky, Principal
The Nancy Finch Wallace Chair

To Be Filled, Associate Principal
The Blanche Martin Shaw Chair

David Kilbride, Assistant Principal

Qi Cao

Janet Gayer Hall

Leah Latorraca*

Oskar Ozolinch

Anton Shelepov

Irina Shelepov*

Jeanine Wynton

To Be Filled

Viola

Samuel Gold, Principal
*The Florence Spinks and Charles Jacob
Cate and Alma Yondorf and Sylvan
Hirschberg Chair*

Kurt Tseng, Associate Principal
The Betty Ellen Madry Chair

Brian Sherwood, Assistant Principal

Petra Berényi

Paul Malcolm

Amy Mason
The J. Sidney Kirk Chair

Sandra Schwarcz
*The Samuel H. and Anne Latham Johnson
Chair*

Kirsten Swanson*

Cello

Bonnie Thron, Principal
The June and Tom Roberg Chair

Elizabeth Beilman, Associate Principal
The Sarah Carlyle Herbert Dorroh Chair

Peng Li, Assistant Principal
Anonymously Endowed

Yewon Ahn
Anonymously Endowed

Sunrise Kim**
The William Charles Rankin Chair

Rosalind Leavell*

David Meyer**
The Nell Hirschberg Chair

Marc Moskovitz*

Lisa Howard Shaughnessy
The Sara Wilson Hodgkins Chair

Nathaniel Yaffe
*The Secretary of Cultural Resources
Betty Ray McCain Chair*

Double Bass

Leonid Finkelshteyn, Principal
The Martha and Peyton Woodson Chair

Bruce Ridge*, Associate Principal
The John C. and Margaret P. Parker Chair

Craig Brown
The Mark W. McClure Foundation Chair

Erik Dyke
The Harllee H. and Pauline G. Jobe Chair

John Spuller*
The Dr. and Mrs. Preston H. Gada Chair

Flute

Anne Whaley Laney, Principal
*The Mr. and Mrs. George M. Stephens
Chair*

Mary E. Boone, Assistant Principal
The Dr. and Mrs. Shaler Stidham, Jr. Chair

Elizabeth Anderton Lunsford
The Jack and Sing Boddie Chair

Piccolo

Elizabeth Anderton Lunsford
The Jean Dunn Williams Chair

Oboe

Melanie Wilsden, Principal
The Hardison and Stoltze Chair

Joseph Peters, Associate Principal
The Lizette T. Dunham Chair

Amanda LaBrecque*

Sandra Posch**
The Clarence and Alice Aycock Poe Chair

English Horn

Joseph Peters
The Bruce and Margaret King Chair

Clarinet

Samuel Almaguer, Principal
The Mr. and Mrs. J. Christopher Walker, II Chair

Zhenyu Wang*, Assistant Principal
The Kathryn Powell and Green Flavie Cooper Chair

Bassoon

Aaron Apaza, Principal
The Mr. and Mrs. Fitzgerald S. Hudson Chair

Wenmin Zhang, Assistant Principal
The Beethoven Chair

French Horn

Rebekah Daley, Principal
The Mary T. McCurdy Chair

Kimberly Van Pelt, Associate Principal
The Paul R. Villard and Gabriel Wolf Chair

Corbin Castro*
The Roger Colson and Bobbi Lyon Hackett Chair

Tanner West*
The James Marion Poyner Chair

To Be Filled
The Mary Susan Kirk Fulghum Chair

Trumpet

Paul Randall, Principal
The George Smedes Poyner Chair

David Dash*, Associate Principal
The Henry and Martha Zaytoun and Family Chair

Trombone

John Ilika, Principal
The Thomas Warwick Steed, Jr. Family Chair

Jonathan Randazzo, Assistant Principal
The Frances Armour Bryant Chair

Bass Trombone

Matthew Neff
Anonymously Endowed

Tuba

Seth Horner, Principal
The Governor and Mrs. James G. Martin, Jr. Chair

Harp

Anita Burroughs-Price
Vonda Darr

Timpani

Colin Hartnett, Principal
The Patricia R., Steven T. and George F. Hackney III Chair

Percussion

Richard Motylinski, Principal
The Margery and Earl Johnson, Jr. Chair

Rajesh Prasad, Assistant Principal
The Abram and Frances Pascher Kanof Chair

Organ

To Be Filled
The Albert and Susan Jenkins and Family Organ Chair

Library

Stephanie Wilson, Principal Orchestra Librarian
The Mary Colvert and Banks C. Talley Chair

*Acting position

**Leave of absence

Named musician chairs are made possible through very meaningful gifts to the Symphony's endowment. As such, these donor families are also members of the Lamar Stringfield Society.

All string players rotate stands on a periodic basis in each section with the exception of titled players: Principals, Associate Principals, and Assistant Principals.

The North Carolina Symphony is a member of the League of American Orchestras and the International Conference of Symphony and Opera Musicians.

The North Carolina Master Chorale is the Resident Chorus of the North Carolina Symphony.

Thank you to the generous individuals, businesses, foundations, and community partners who support the North Carolina Symphony through contributions each season. The Symphony's performances and extensive music education and community service programs are made possible by your support.

Scan here for a list of our generous donors:

